



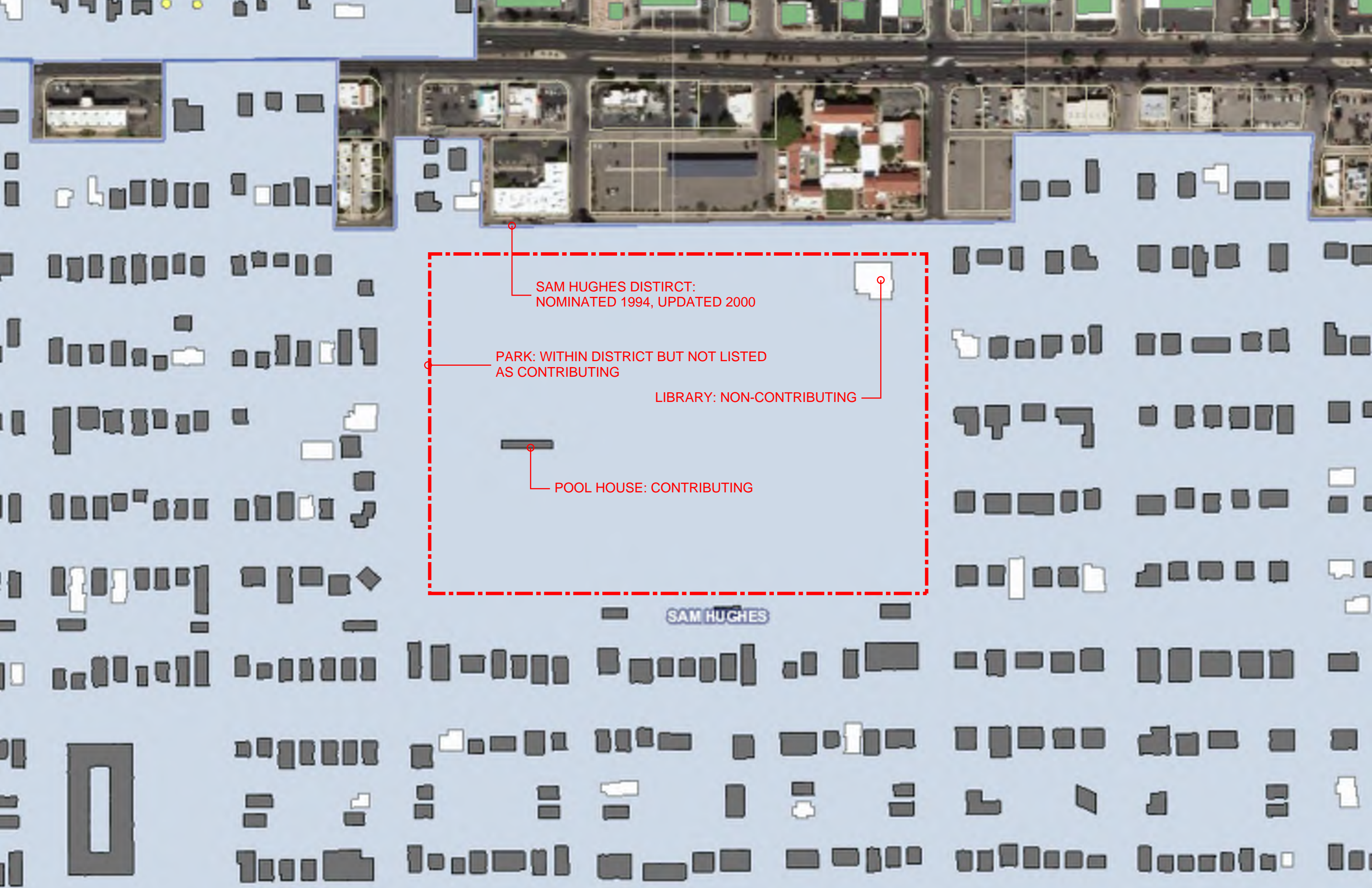
- Introductions
- Project Background
- Previous Public Meetings Summary
- Current Design
- Q&A



1ST STREET

TUCSON BLVD

TREAT AVE



SAM HUGHES DISTRICT:
NOMINATED 1994, UPDATED 2000

PARK: WITHIN DISTRICT BUT NOT LISTED
AS CONTRIBUTING

LIBRARY: NON-CONTRIBUTING

POOL HOUSE: CONTRIBUTING

SAM HUGHES

BACKGROUND

Developmental History



HIMMEL LIBRARY EXPANSION + RENOVATION
PIMA COUNTY PUBLIC LIBRARIES



BACKGROUND

Developmental History

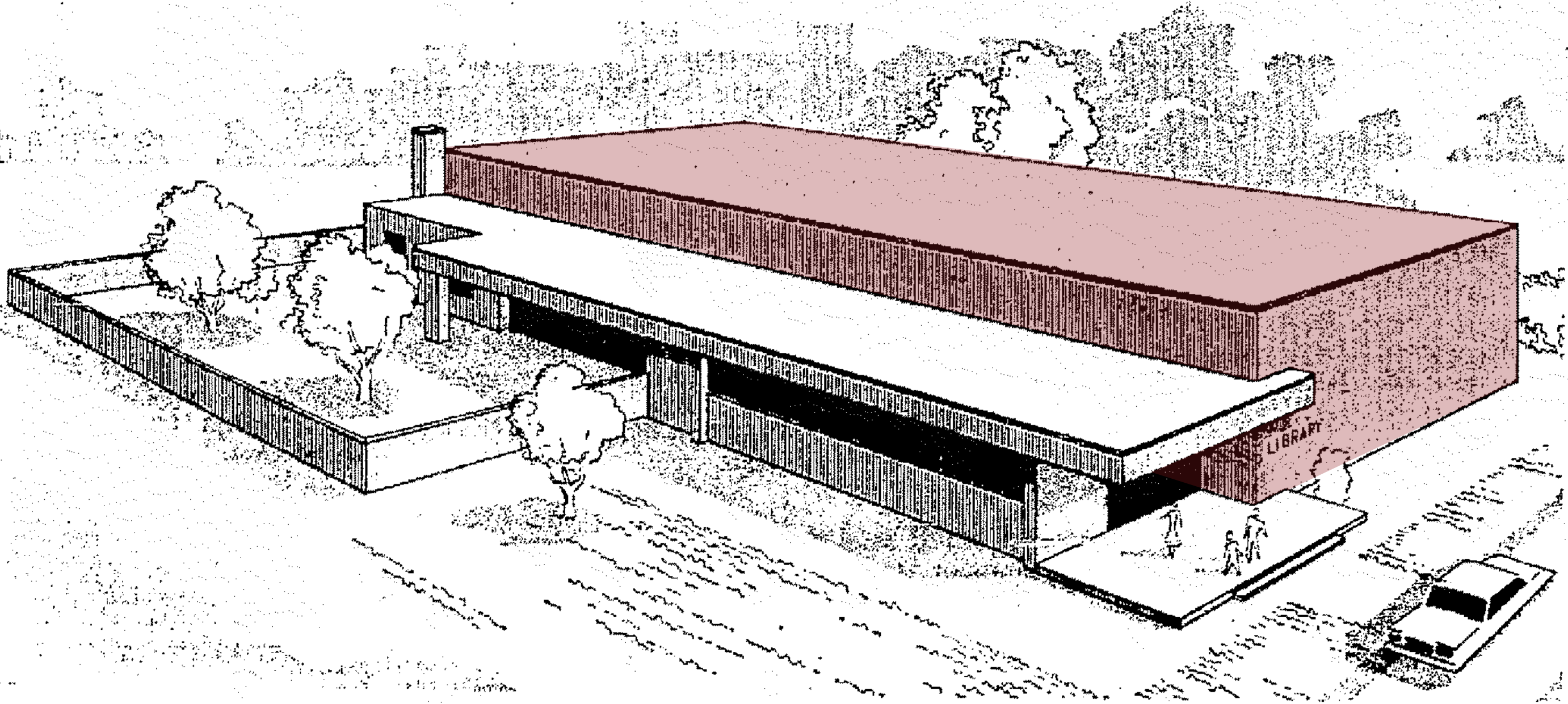


HIMMEL LIBRARY EXPANSION + RENOVATION
PIMA COUNTY PUBLIC LIBRARIES



BACKGROUND

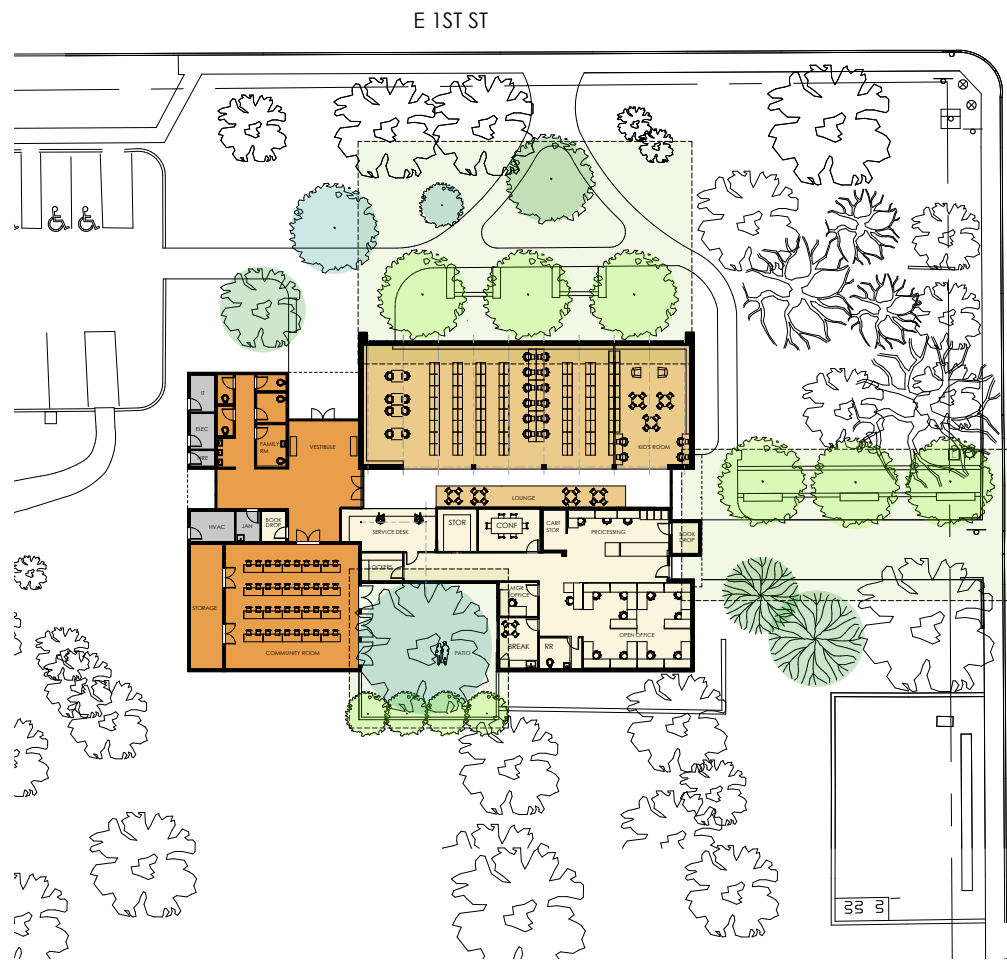
Developmental History



HIMMEL PARK BRANCH

HIMMEL LIBRARY EXPANSION + RENOVATION
PIMA COUNTY PUBLIC LIBRARIES





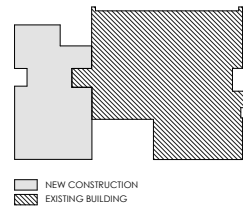
OPTION 2: WEST ENTRY

- NEW WEST ENTRY
- SOUTH PATIO OFF MPR
- NEW BUILD COMMUNITY SPACE

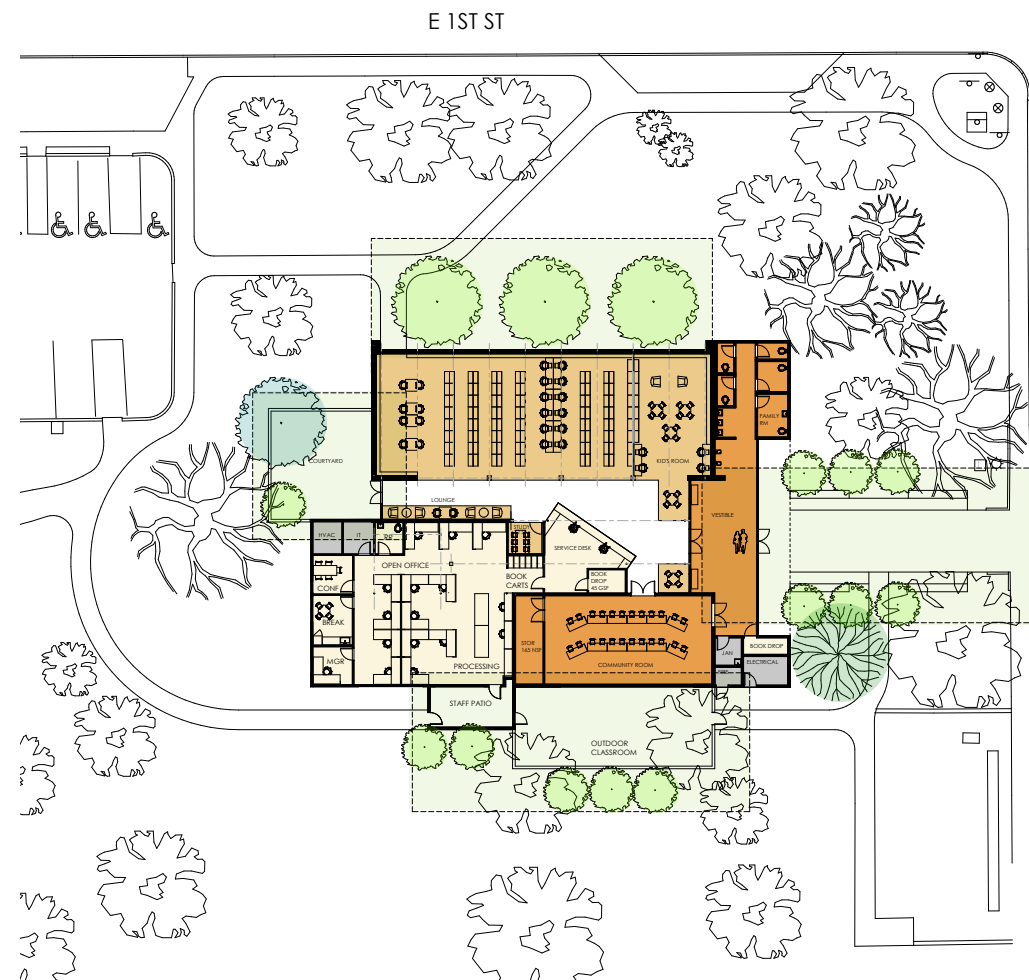
AREA BREAKDOWN

- 2,585 COMMUNITY SHARED
- 3,090 SF READING / STACKS
- 2,400 SF STAFF AREA
- 355 SF BUILDING SERVICE
- 9,400 SF TOTAL**

EXISTING VS NEW



PMM



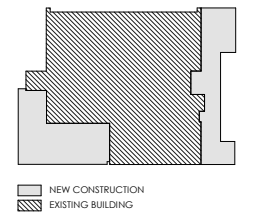
OPTION 1: EAST ENTRY

- LARGE EASTERN ENTRY
- WEST PATIO
- OPEN AND WELCOMING
- NEW BUILD STAFF AREA

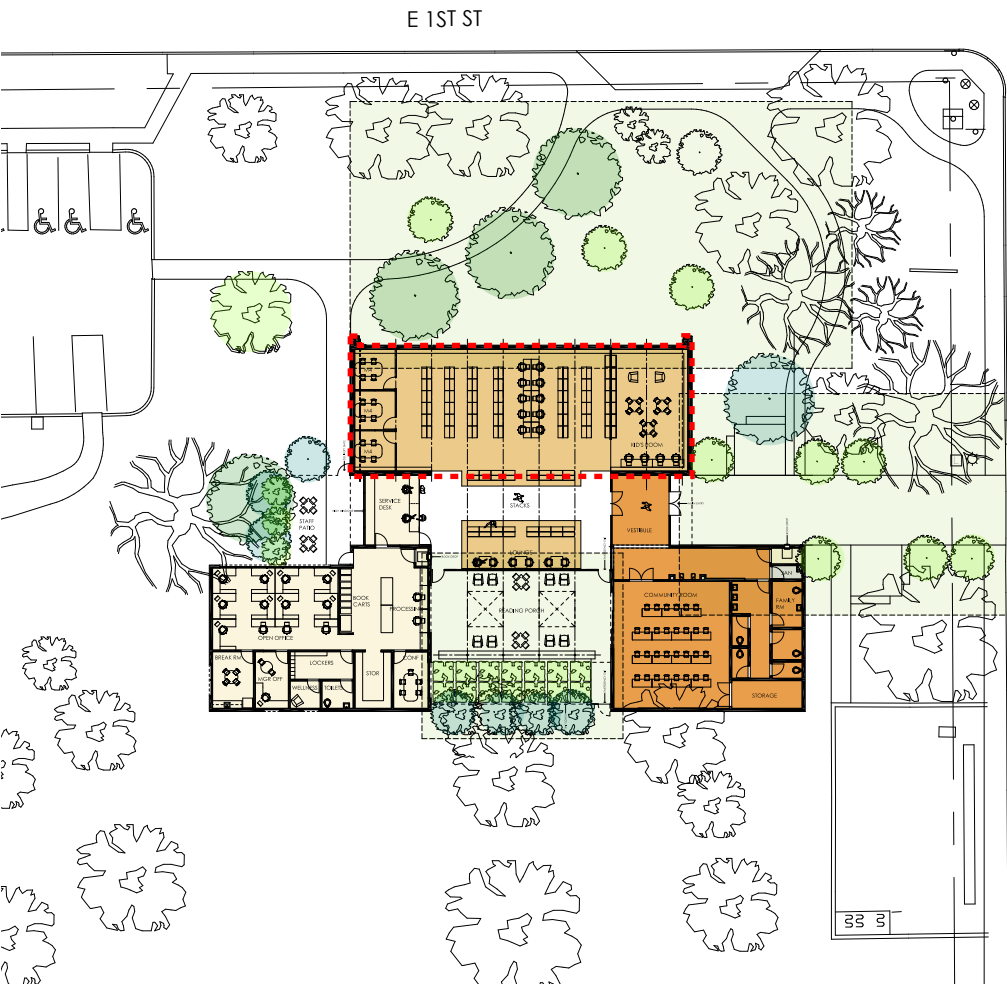
AREA BREAKDOWN

- 2,585 COMMUNITY SHARED
- 3,090 SF READING / STACKS
- 2,400 SF STAFF AREA
- 355 SF BUILDING SERVICE
- 9,400 SF TOTAL**

EXISTING VS NEW



PMM



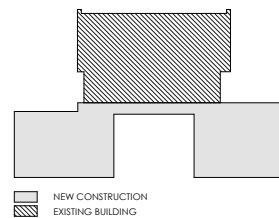
OPTION 3: BACK PORCH

- DAYLIGHT AND VIEWS FROM READING ROOM
- PATIO LINK TO READING ROOM AND COMMUNITY ROOM
- OPEN TO PARK

AREA BREAKDOWN

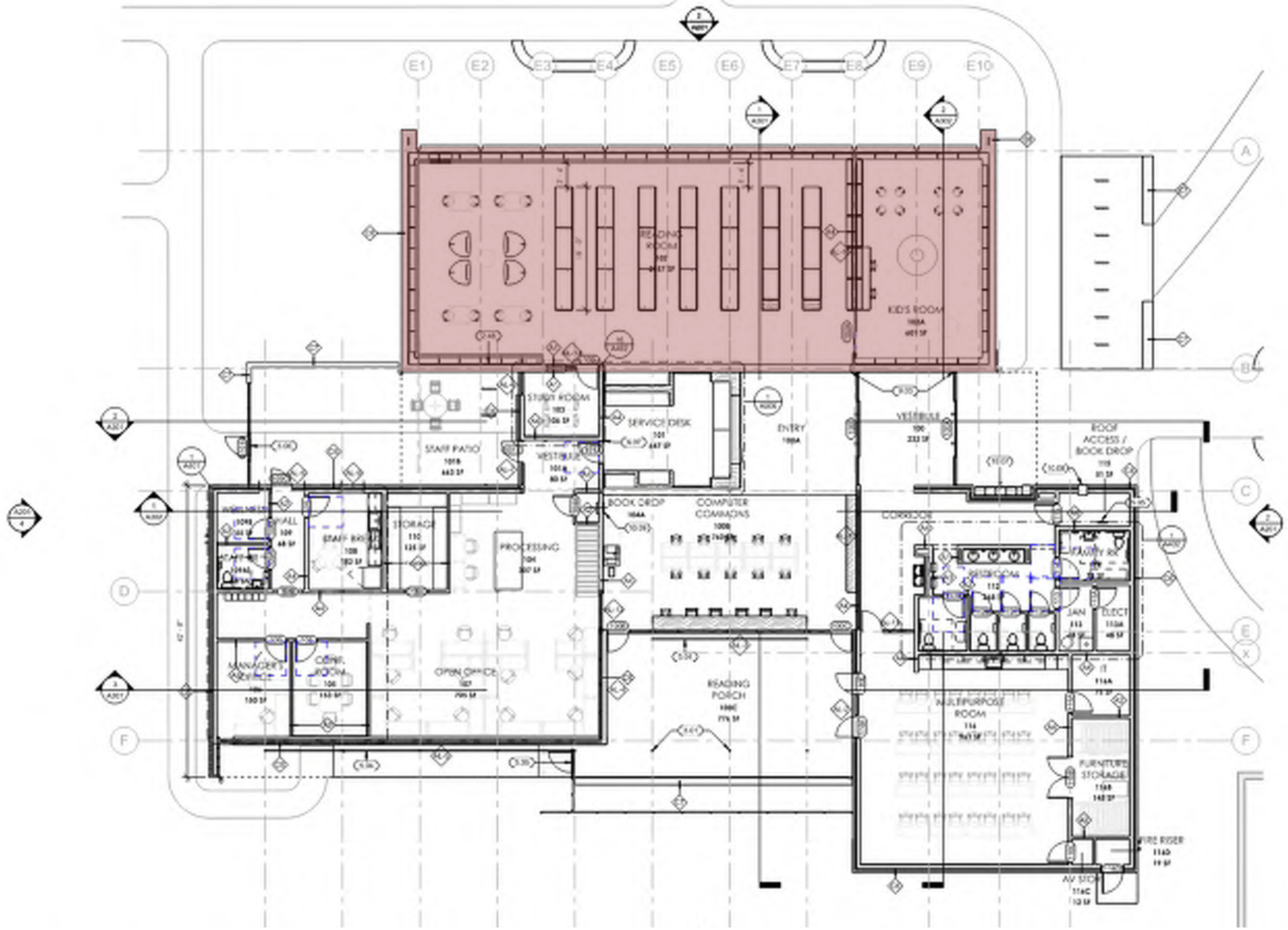
- 2,585 COMMUNITY SHARED
- 3,090 SF READING / STACKS
- 2,400 SF STAFF AREA
- 355 SF BUILDING SERVICE
- 9,400 SF TOTAL**

EXISTING VS NEW



PMM

1ST PUBLIC MEETING
ALTERNATIVE CONCEPTS
APRIL 2024





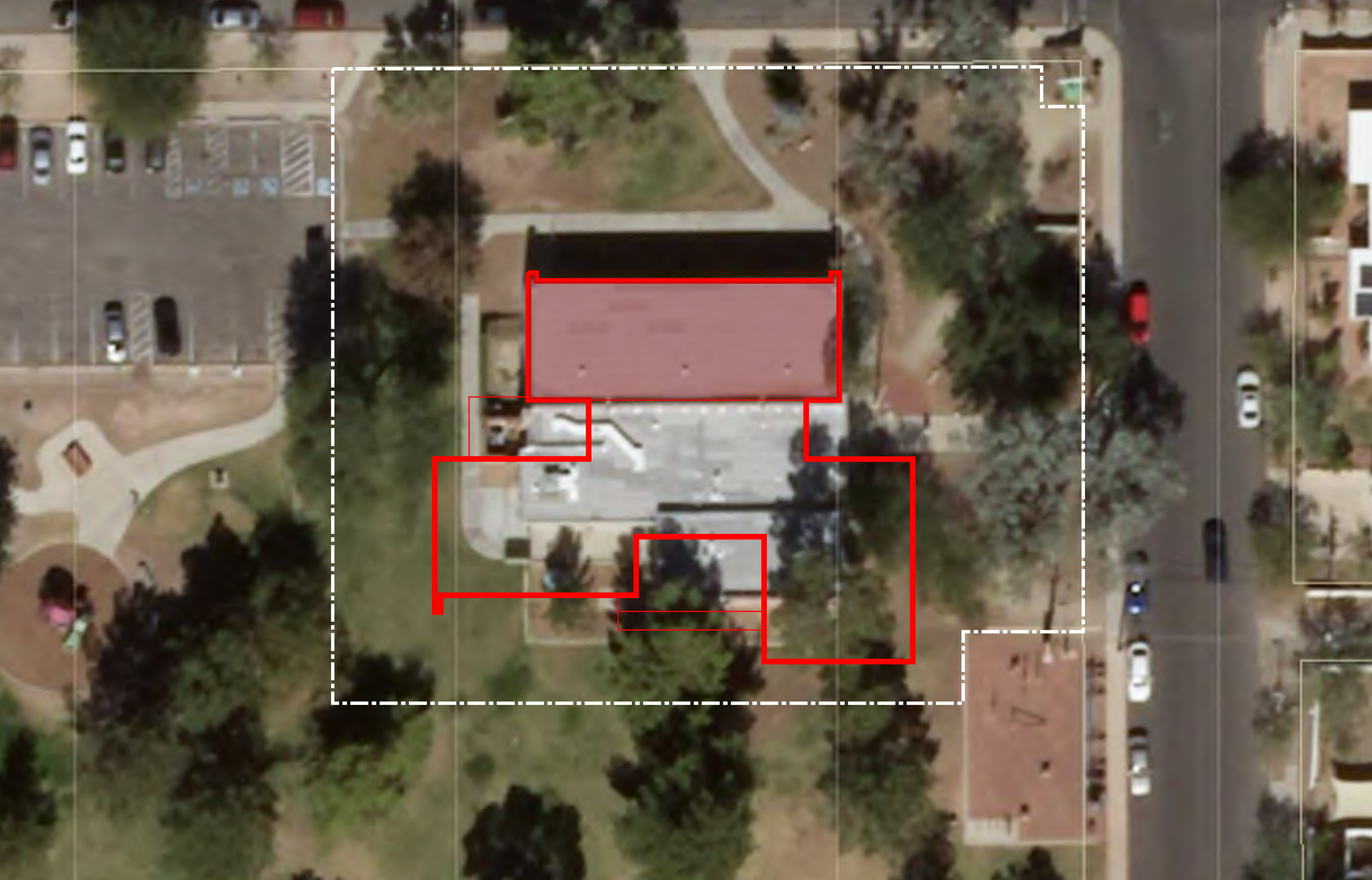




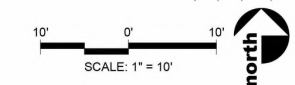
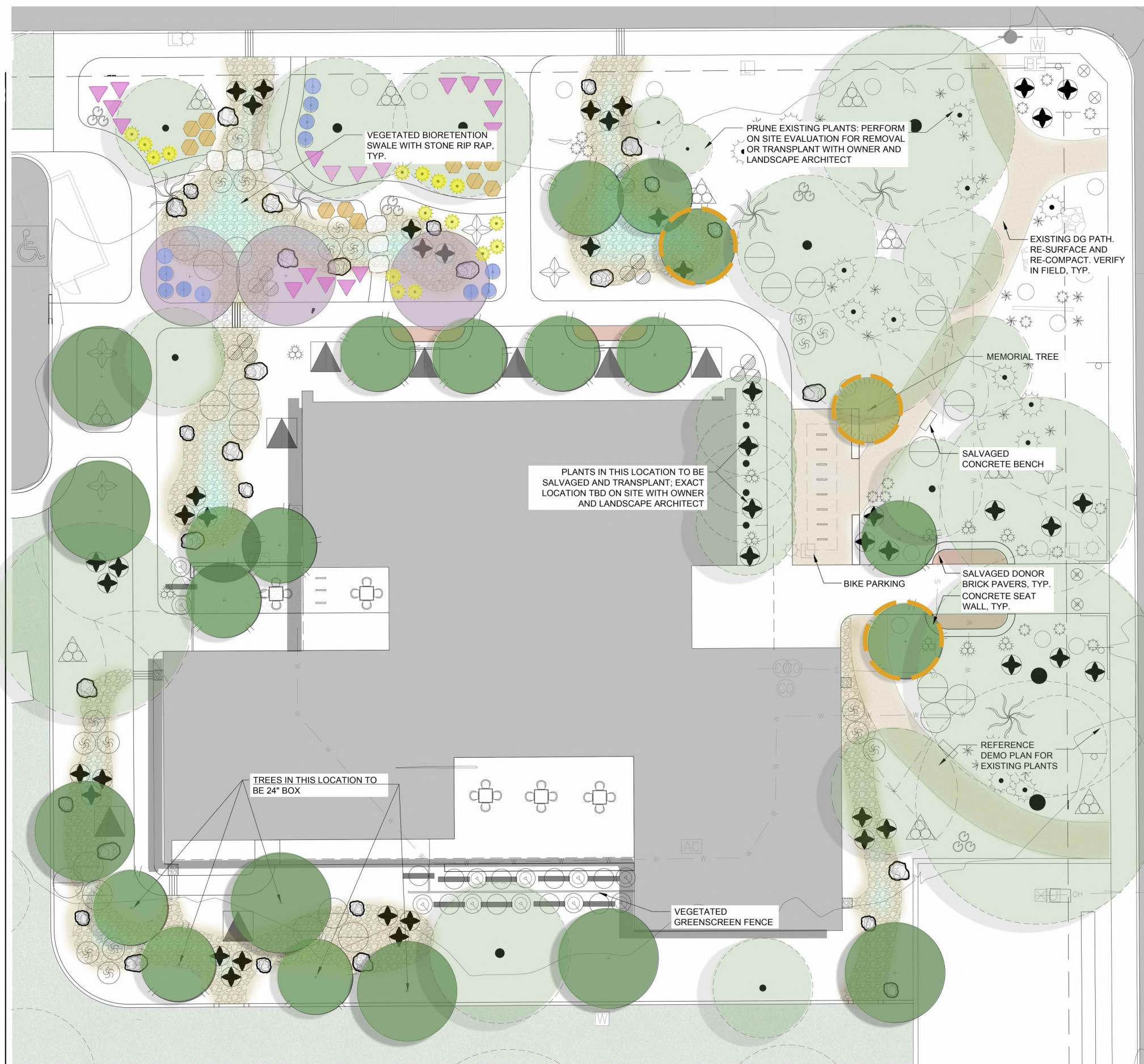








PLANT LEGEND			
SYMBOL	BOTANICAL NAME	COMMON NAME	CONTAINER SIZE
EXISTING TREES			
	Varies	Varies	
TREES			
	<i>Acacia willardiana</i>	Palo Blanco	15 Gallon (3) 24" Box
	<i>Bahuinia lunarioides</i>	Anacacho Orchid	15 Gallon
	<i>Prosopis velutina</i>	Velvet Mesquite	15 Gallon (2) 24" Box
ACCENTS / SHRUBS			
	<i>Agave americana variegata</i>	Variiegated Century	5 Gallon
	<i>Agave parryii</i>	Parry's Agave	5 Gallon
	<i>Asclepias subulata</i>	Desert Milkweed	1 Gallon
	<i>Echinocactus grusonii</i>	Golden Barrel	5 Gallon
	<i>Fouquieria splendens</i>	Ocotillo	5 Gallon
	<i>Jatropha cardiophylla</i>	Limberbush	1 Gallon
	<i>Justicia spicigera</i>	Mexican Honeysuckle	1 Gallon
	<i>Opuntia Santa Rita</i>	Purple Prickly Pear	1 Gallon
	<i>Pachycereus marginatus</i>	Mexican Fence Post	1 Gallon
	<i>Simmondsia chenensis</i>	Jojoba	1 Gallon
	<i>Tecoma Stans</i>	Arizona Yellow Bells	1 Gallon
	<i>Yucca Buccata</i>	Banana Yucca	1 Gallon
VINES			
	<i>Passiflora mexicana</i>	Mexican Passionflower	5 Gallon
	<i>Trachelospermum jasminoides</i>	Star Jasmine	5 Gallon
INERT MATERIAL			
	1/2" COMPACTED DECOMPOSED GRANITE - MATCH EXISTING		
	3/4" LANDSCAPE ROCK - COLOR TBD		
	STONE RIPRAP		
	Pollinator Spring Bloom		
	Pollinator Summer Bloom		
	Pollinator Autumn Bloom		
	Pollinator Winter Bloom		



Memorial Tree Species Suggestions:



Bahuinia lunarioides
Anacacho Orchid



Olneya tesota
Desert Ironwood



Punica granatum
Pomegranate

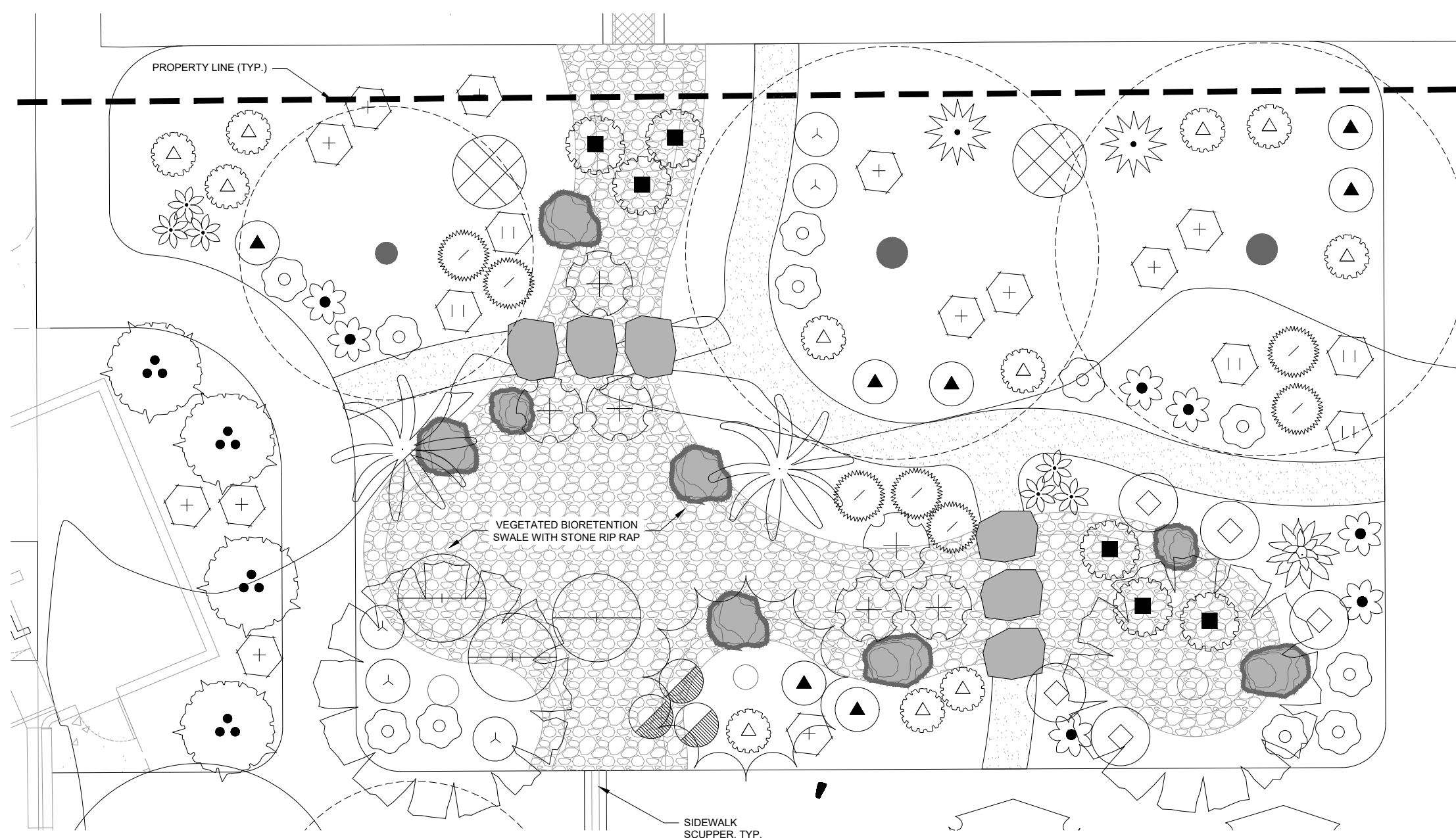
- Potential Locations for Memorial Tree
- Potential Locations for Desert Willow
Chilopsis linearis - Warren Jones

PRELIMINARY NOT FOR CONSTRUCTION
50% CONSTRUCTION DOCUMENTS
10/03/2024

HIMMEL PARK LIBRARY
1035 N TREAT AVE
L300 PLANTING PLAN

DRAWN BY: Team REVISIONS NO. DATE ISSUE
CHECKED BY: Team

© DATE: Project Date
PROJECT NO: Project Number



1 PLAN ENLARGEMENT - POLLINATOR GARDEN
SCALE: 1" = 4'-0"

PLANT SCHEDULE

SYMBOL	QTY	BOTANICAL / COMMON NAME	SIZE	SYMBOL	QTY	BOTANICAL / COMMON NAME	SIZE	SYMBOL	QTY	BOTANICAL / COMMON NAME	SIZE	SYMBOL	QTY	BOTANICAL / COMMON NAME	SIZE
TREES															
	12	ACACIA WILLARDIANA PALO BLANCO	15 GAL.		3	ACACIA WILLARDIANA PALO BLANCO	24"BOX		1	BAUHINIA LUNARIOIDES ANACACHO ORCHID TREE	15 GAL.		2	CHILOPSIS LINEARIS DESERT WILLOW	15 GAL.
	-	EXISTING TREE TO REMAIN PROTECT IN PLACE	EXISTING		5	PROSOPIS VELUTINA VELVET MESQUITE	15 GAL.		2	PROSOPIS VELUTINA VELVET MESQUITE	24"BOX		1	TARA CACALACO CASCALOTE	15 GAL.
POLLINATOR GARDEN															
	5	ANISACANTHUS THURBERI THURBER'S DESERT HONEYSUCKLE	1 GAL.		5	BAILEYA MULTIRADIATA DESERT MARIGOLD	1 GAL.		5	CALLIANDRA ERIOPHYLLA FAIRY DUSTER	1 GAL.		7	GAILLARDIA PULCHELLA INDIAN BLANKET	1 GAL.
	7	KALLSTROEMIA GRANDIFLORA ARIZONA POPPY	1 GAL.		7	PENSTEMON EATONII FIRECRACKER PENSTEMON	1 GAL.		11	SPHAERALCEA AMBIGUA DESERT GLOBEMALLOW	1 GAL.		12	TETRAENEURIS ACAULIS ANGELITA DAISY	1 GAL.
	7	ZINNIA ACEROSA DESERT ZINNIA	1 GAL.		5	ANISACANTHUS THURBERI THURBER'S DESERT HONEYSUCKLE	1 GAL.		6	AGAVE AMERICANA 'VARIEGATA' VARIEGATED CENTURY PLANT	5 GAL.		19	AGAVE PARRYI PARRY'S AGAVE	5 GAL.
SHRUBS & ACCENTS															
	18	ASCLEPIAS SUBULATA DESERT MILKWEED	1 GAL.		17	ECHINOCACTUS GRUSONII GOLDEN BARREL CACTUS	5 GAL.		5	FOQUIERIA SPLENDENS OCOTILLO	5 GAL.		15	JATROPHA CARDIOPHYLLA LIMBERBUSH	1 GAL.
	10	OPUNTIA SANTA-RITA SANTA RITA PRICKLY PEAR	1 GAL.		46	JUSTICIA SPICIGERA MEXICAN HONEYSUCKLE	1 GAL.		11	PACHYCEREUS MARGINATUS MEXICAN FENCE POST CACTUS	1 GAL.		21	SIMMONDSIA CHINENSIS JOJOBA	1 GAL.
	12	TECOMA STANS YELLOW BELLS	1 GAL.		12	YUCCA BACCATA BANANA YUCCA	1 GAL.		10	PASSIFLORA MEXICANA MEXICAN PASSIONFLOWER	5 GAL.		11	TRACHELOSPERMUM JASMINOIDES CHINESE STAR JASMINE	5 GAL.
VINES															
INERT MATERIAL															
		1/4" COMPACTED DECOMPOSED GRANITE MATCH EXISTING				3/4" LANDSCAPE ROCK COLOR TBD				STONE RIPRAP					