



HIMMEL LIBRARY EXPANSION + RENOVATION
PIMA COUNTY PUBLIC LIBRARIES



MAIN TOPICS OF DISCUSSION

1. Introductions
2. Background
3. Programming
4. Alternative Concept Plans



HIMMEL LIBRARY EXPANSION + RENOVATION
PIMA COUNTY PUBLIC LIBRARIES

PMM

INTRODUCTIONS

Pima County



HIMMEL LIBRARY EXPANSION + RENOVATION
PIMA COUNTY PUBLIC LIBRARIES

PMM

INTRODUCTIONS

Poster Mirto McDonald

Community Architects



HIMMEL LIBRARY EXPANSION + RENOVATION
PIMA COUNTY PUBLIC LIBRARIES



INTRODUCTIONS

Poster Mirto McDonald

Library Rehab + Expansion



HIMMEL LIBRARY EXPANSION + RENOVATION
PIMA COUNTY PUBLIC LIBRARIES



INTRODUCTIONS

Poster Mirto McDonald

Historic Preservation



HIMMEL LIBRARY EXPANSION + RENOVATION
PIMA COUNTY PUBLIC LIBRARIES



INTRODUCTIONS

Poster Mirto McDonald Team



Corky Poster, Executive Assistant

Project Director
Programming
Public Outreach
Community Meetings
Historic Preservation



Jon Mirto, Principal Architect

Hands-on Design + Detailing
Cost Control
Sub-Consultant Coordination Lead
Construction Document Lead
Technical Lead



Lucy Nielsen, Project Manager

Project continuity, start to finish
Public + User Group Interface
Design + Visualization
Document Manger
Construction Support



Daniela Nunez, Designer

Public Meetings
User Group Interface
Concept Design
Project + Construction Support

HIMMEL LIBRARY EXPANSION + RENOVATION
PIMA COUNTY PUBLIC LIBRARIES

PMM

INTRODUCTIONS

Consultant Team



Dan Sharp,
Landscape
Architect



Kevin Hall,
Civil Engineer



Scott Duecker
SE, Structural
Engineer



**Ken
Cawthorne PE,**
Mechanical
Engineer



**Dennis W.
Coon, PE**
Electrical
Engineer



Joe Schranz
CCT, Cost
Estimating

HIMMEL LIBRARY EXPANSION + RENOVATION
PIMA COUNTY PUBLIC LIBRARIES



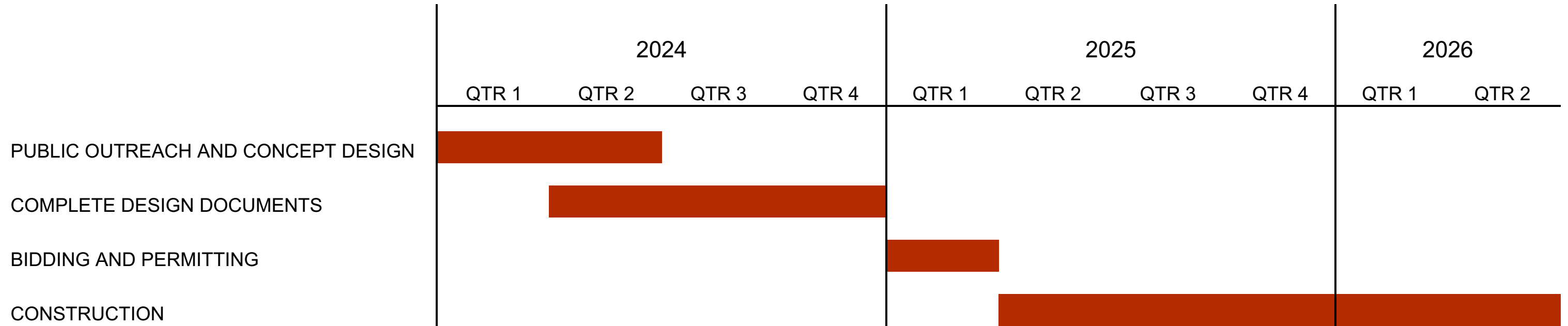
PMM

BACKGROUND

Schedule



HIMMEL PARK DESIGN SCHEDULE



BACKGROUND

Construction Budget: \$4.4M

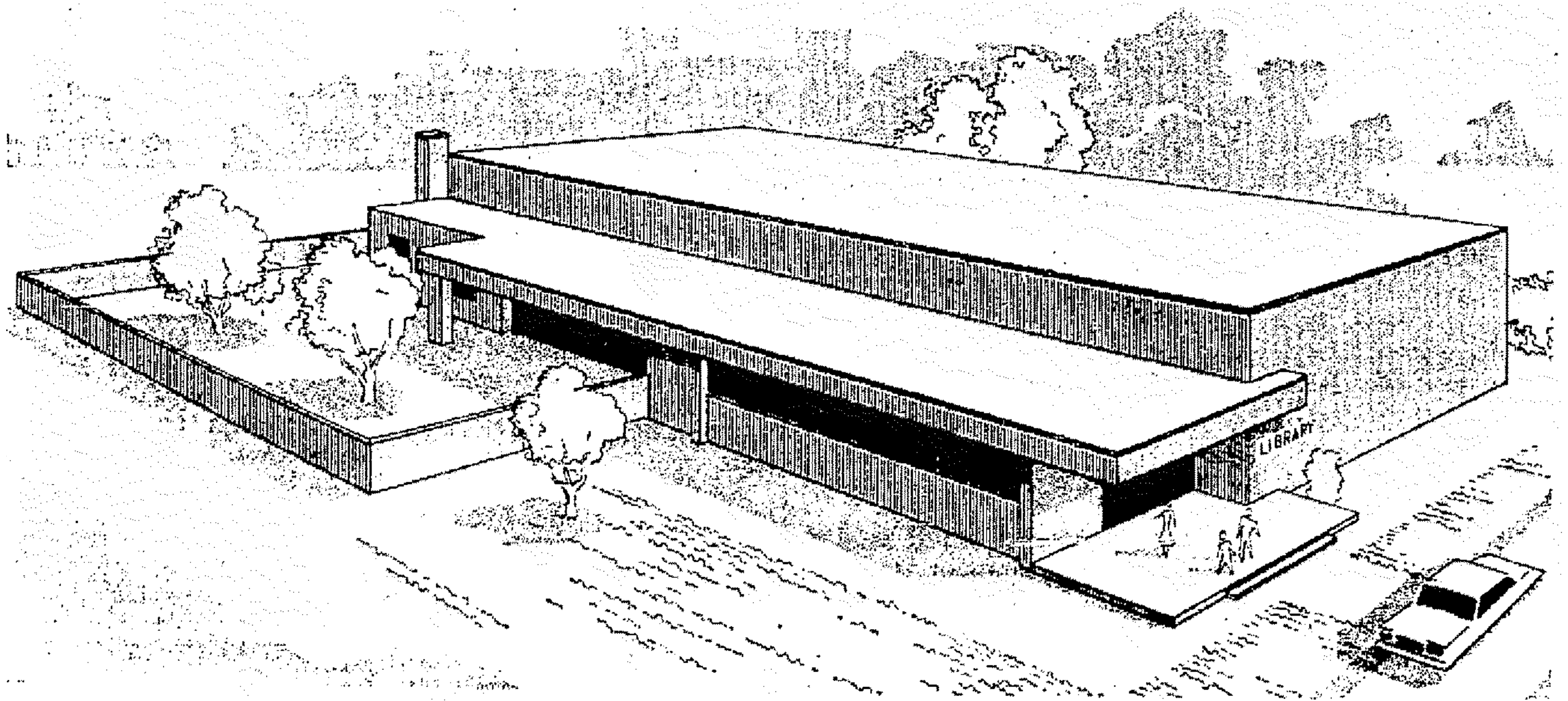


HIMMEL LIBRARY EXPANSION + RENOVATION
PIMA COUNTY PUBLIC LIBRARIES

PMM

BACKGROUND

Developmental History



HIMMEL PARK BRANCH

HIMMEL LIBRARY EXPANSION + RENOVATION
PIMA COUNTY PUBLIC LIBRARIES

PMM

BACKGROUND

Developmental History



HIMMEL LIBRARY EXPANSION + RENOVATION
PIMA COUNTY PUBLIC LIBRARIES



BACKGROUND

Developmental History

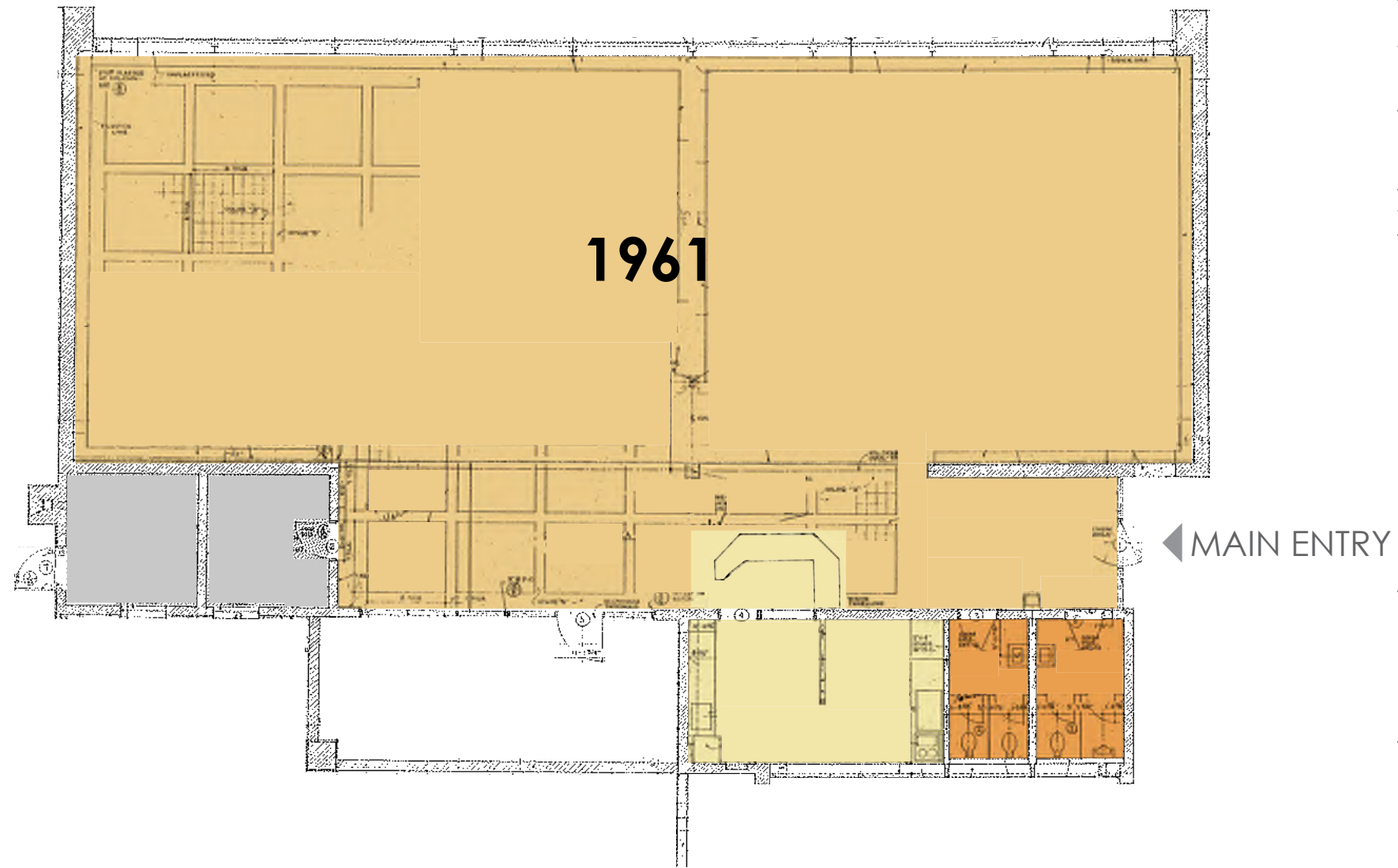


HIMMEL LIBRARY EXPANSION + RENOVATION
PIMA COUNTY PUBLIC LIBRARIES



BACKGROUND

Developmental History, 1961



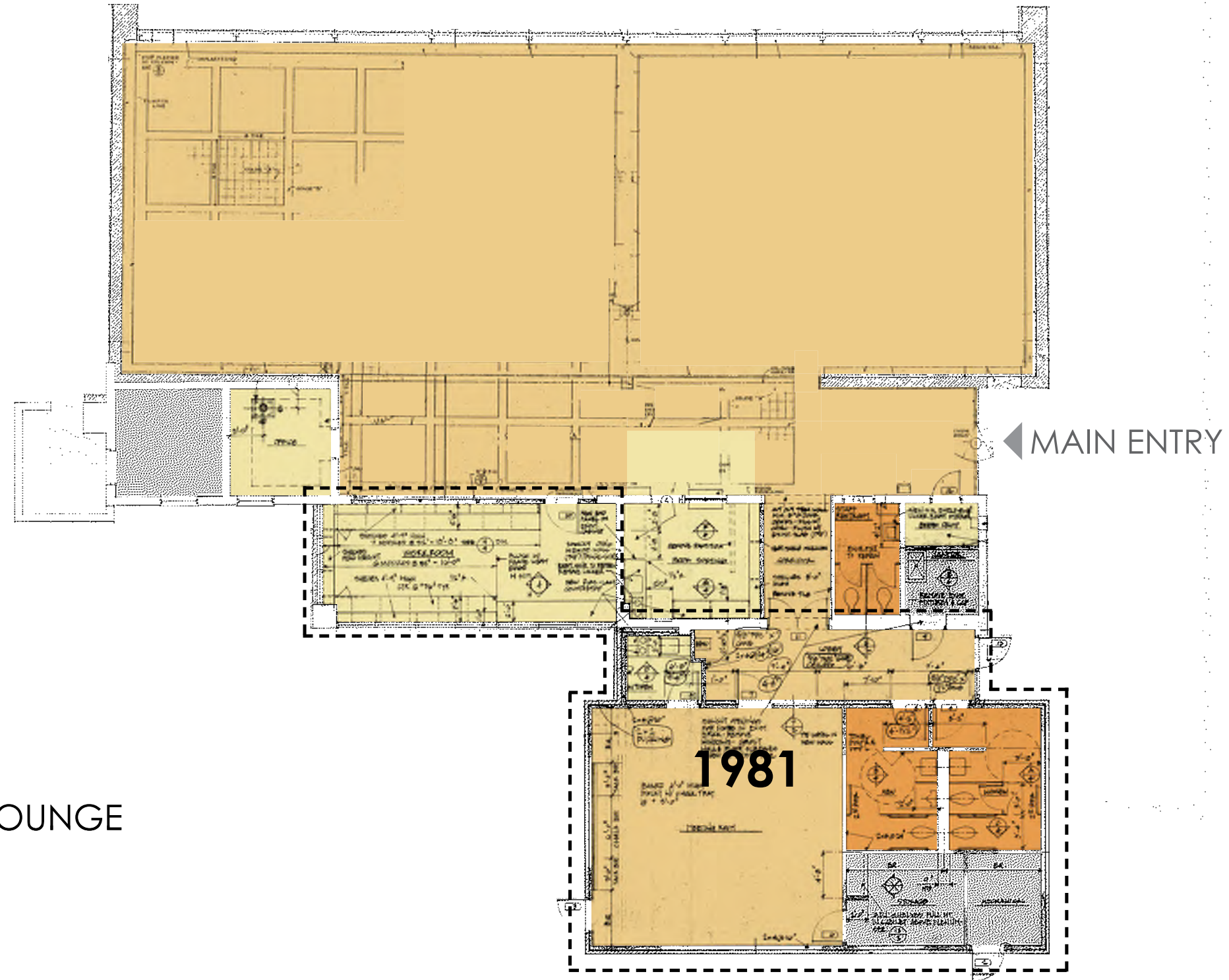
- PUBLIC
- READING ROOM + LOUNGE
- STAFF
- UTILITY

HIMMEL LIBRARY EXPANSION + RENOVATION
PIMA COUNTY PUBLIC LIBRARIES



BACKGROUND

Developmental History, 1981

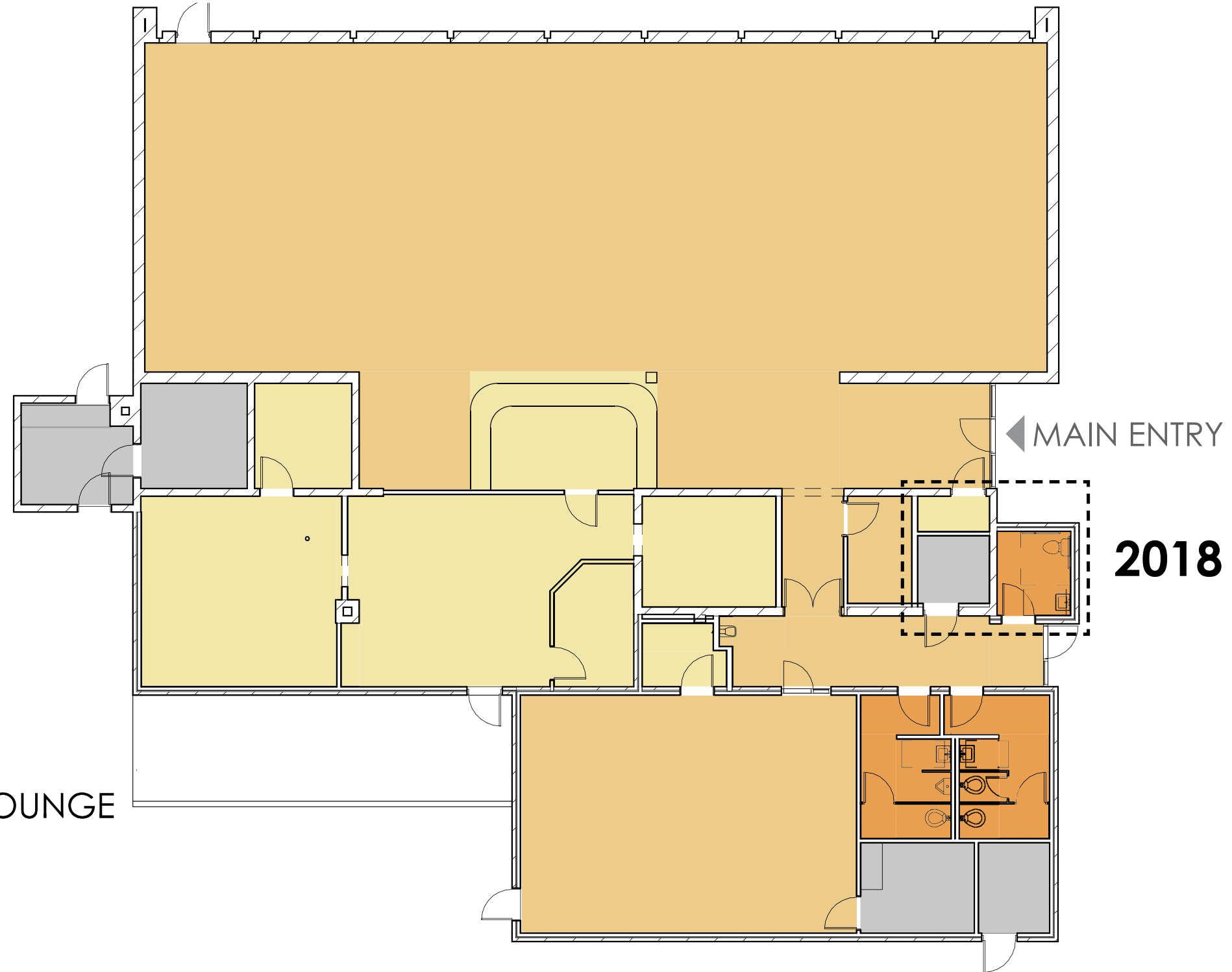


HIMMEL LIBRARY EXPANSION + RENOVATION
PIMA COUNTY PUBLIC LIBRARIES



BACKGROUND

Developmental History, **Current**



HIMMEL LIBRARY EXPANSION + RENOVATION
PIMA COUNTY PUBLIC LIBRARIES

BACKGROUND

Developmental History



Our research has determined that there may be some confusion about the historic status of the Himmel Park Library.

The Himmel Library was built, on the old Edmonson homestead, in 1960-61 with the architect listed as William H. Carr (the founder of the Desert Museum). He was not an architect and so the final drawings were prepared by D. Burr Dubois (Jaastad/Place).

The library was determined to be Non-Contributing in the Sam Hughes 1994 nomination and the 2000 update.

There is no formal SHPO finding that the Library is “Eligible” as an individual listing.

HIMMEL LIBRARY EXPANSION + RENOVATION
PIMA COUNTY PUBLIC LIBRARIES

PMM

BACKGROUND

Developmental History

Nonetheless, PMM will treat the building as if it was Eligible or Contributing. We will follow the Secretary of the Interior's Standards for Rehabilitation.

HIMMEL LIBRARY EXPANSION + RENOVATION
PIMA COUNTY PUBLIC LIBRARIES

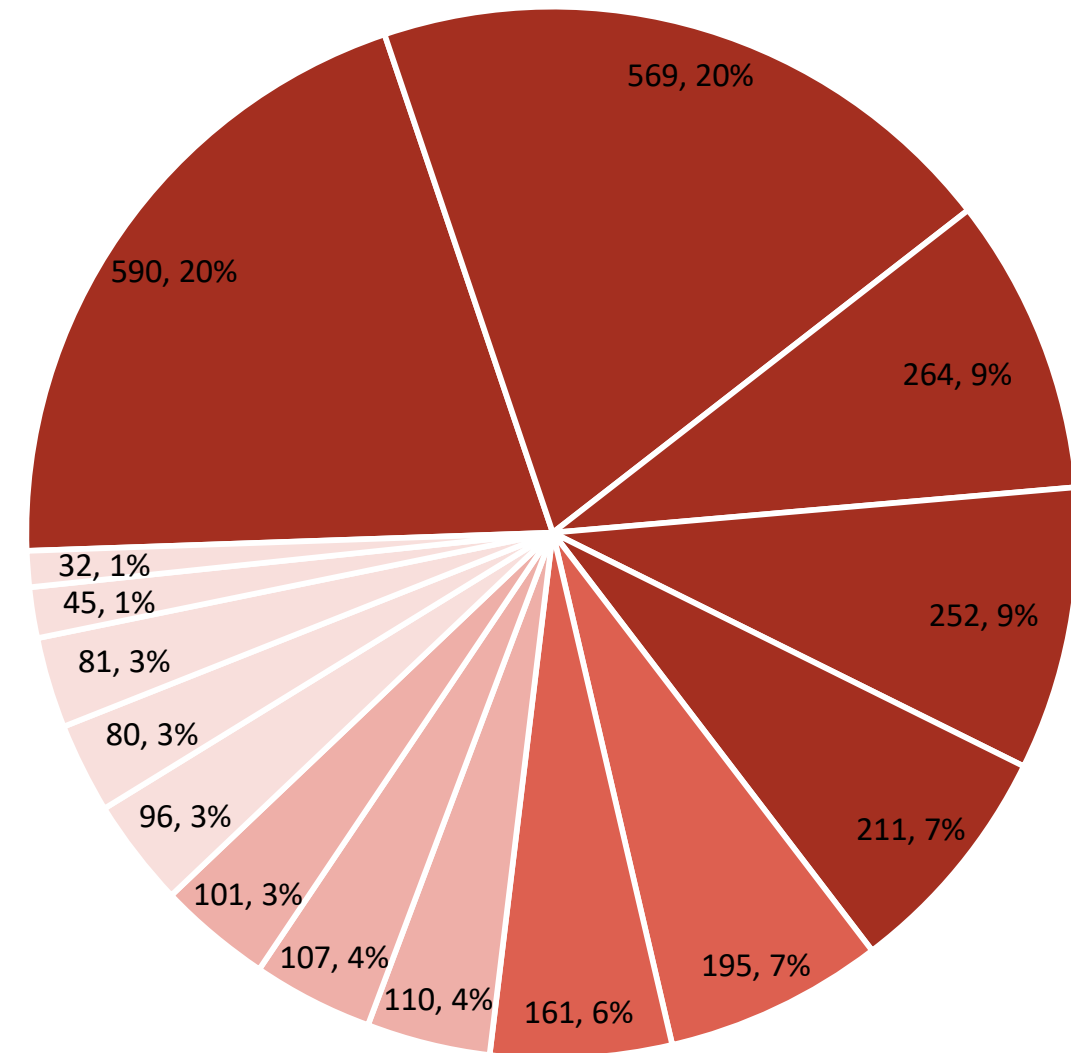
PMM

PROGRAMMING

Survey Results: What we heard from users

QUESTION 1: What part(s) of the current library do you use the most?

579	11	590	Self-check-out / reserve shelving
559	10	569	Book browsing
260	4	264	Public Restrooms / Drinking Fountains
251	1	252	Staff assistance desk
211	0	211	Seed Library
190	5	195	Reading room / lounge
159	2	161	Kids room
108	2	110	Printer
102	5	107	DVDs / Media
100	1	101	Audio Books
93	3	96	Public access computers
79	1	80	Magazines
81	0	81	Meeting Room
44	1	45	Study Room
32	0	32	Other
2848	46	2894	TOTAL RESPONSES

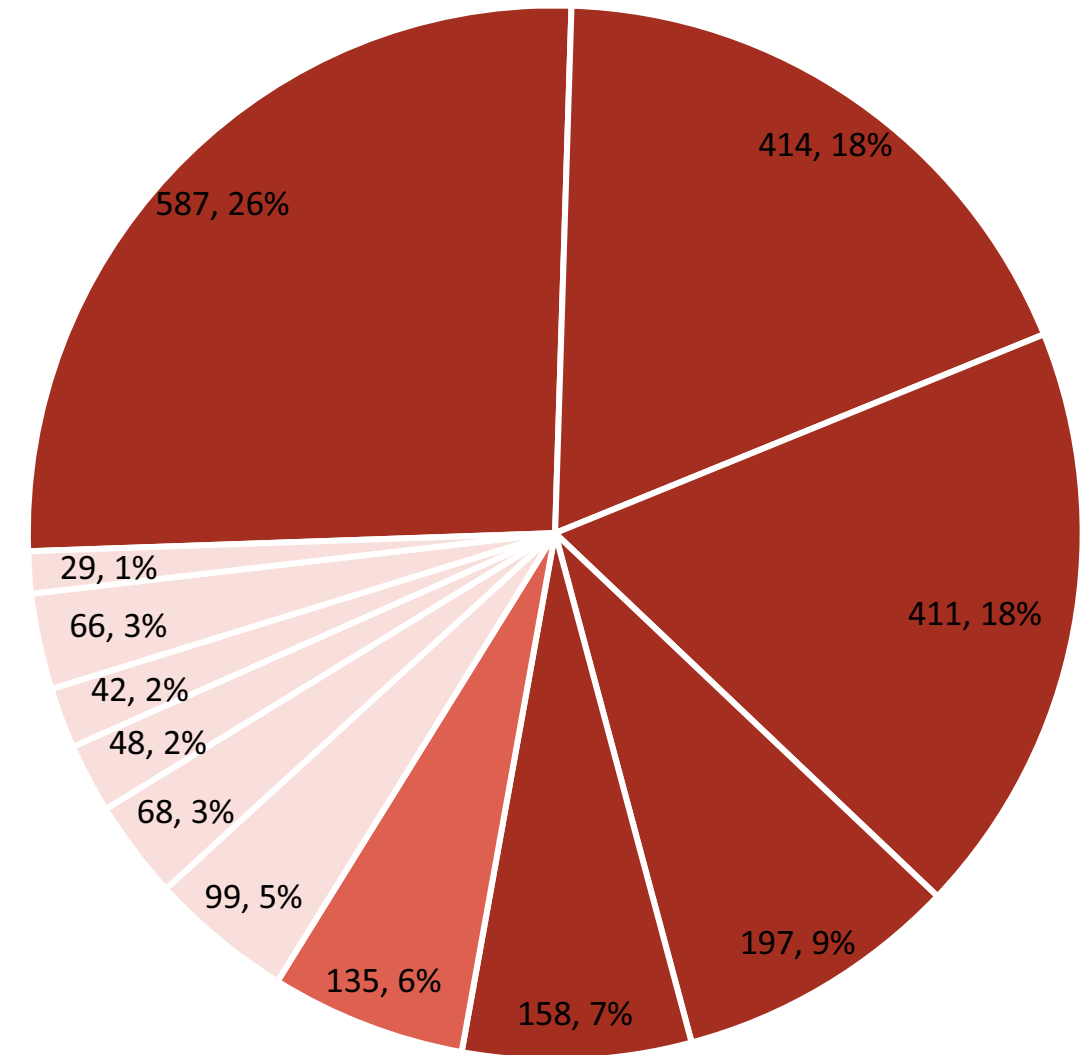


PROGRAMMING

Survey Results: What we heard from users

QUESTION 2: Which of the following library services would you be most likely to participate in?

578	9	587	Lectures and Events
408	6	414	Community Meetings
408	3	411	Arts, Crafts, and Hobbies
193	4	197	Writing and Poetry
157	1	158	Storytime
133	2	135	Computers and Technology
98	1	99	Games and Gaming
68	0	68	Snacks and Meals
46	2	48	Reading Skills
41	1	42	Homework Help
65	1	66	Other
28	1	29	English Language Learning
318	5	2254	TOTAL RESPONSES

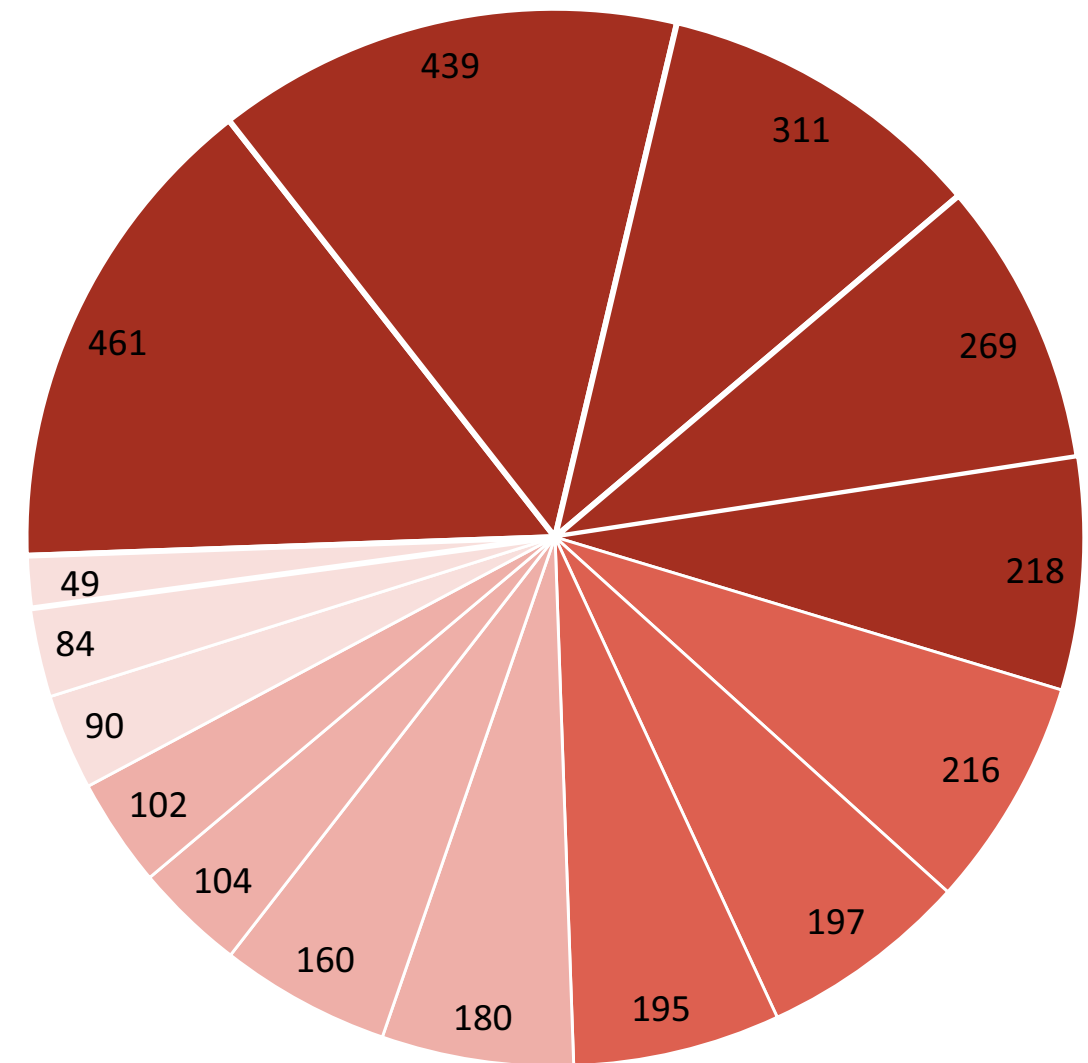


PROGRAMMING

Survey Results: What we heard from users

QUESTION 3: Which of the following public area improvements currently being considered would be most important to you?

453	8	461	Shaded outdoor space for reading, play, or activities.
427	12	439	Expanded shelving capacity for books.
305	6	311	Expanded reading room lounge seating.
268	1	269	Easily accessible power + wifi throughout
216	2	218	Ability to hold public meetings after regular library hours.
213	3	216	Larger and modern public toilet facilities
193	4	197	Larger public meeting room with daylight and views
193	2	195	Kids area
179	1	180	Indoor/outdoor connections
158	2	160	Entry lobby separated from reading room for use as a cooling station.
100	4	104	More space for public access computers
100	2	102	Teen area
85	5	90	Additional study rooms
83	1	84	Pickup Lockers
48	1	49	Other
1568	27	3075	TOTAL RESPONSES

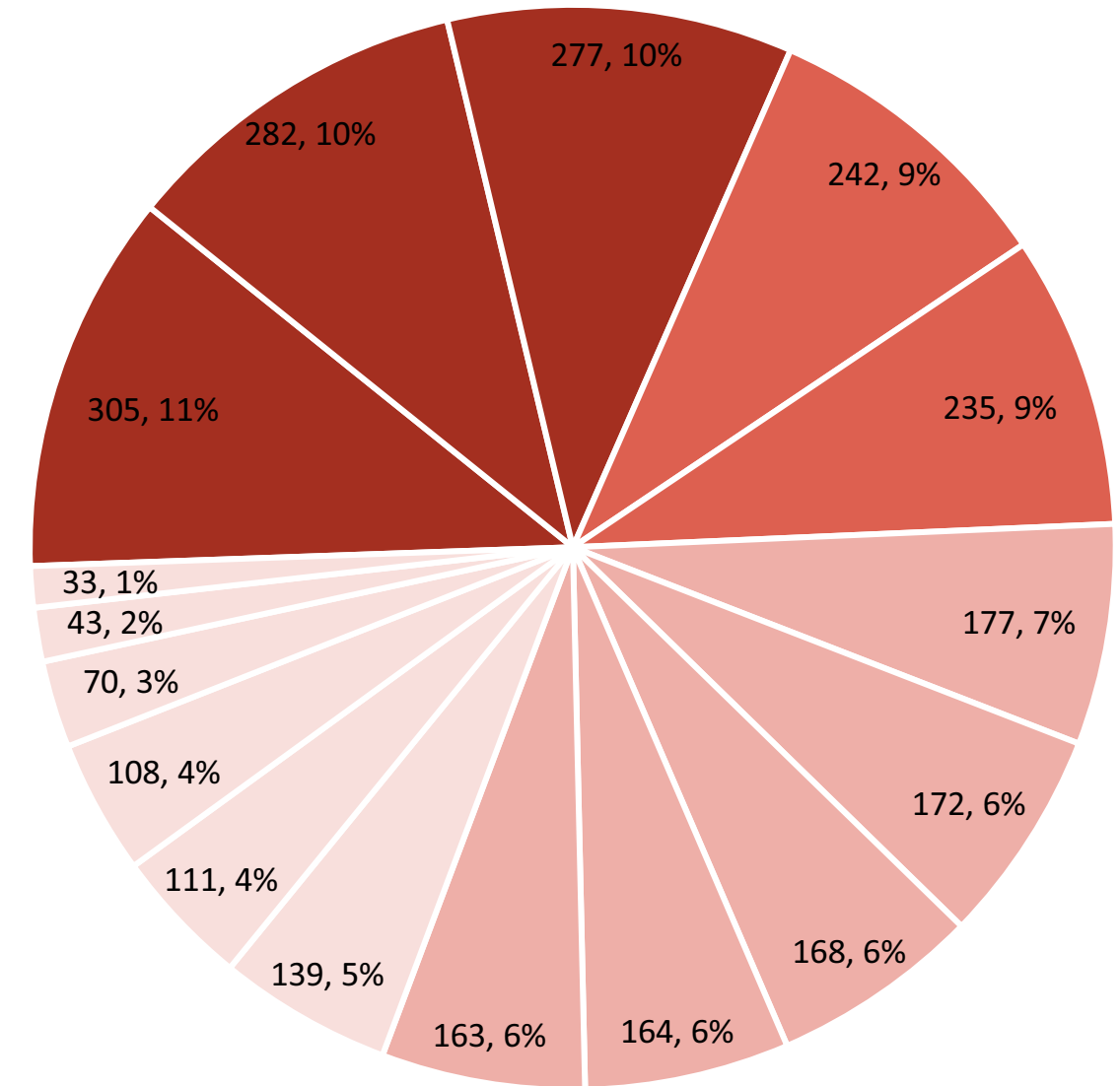


PROGRAMMING

Survey Results: What we heard from users

QUESTION 4: Which of the listed goals seem most important to this project?

389	2	391	Open and welcoming library
363	2	365	Water-harvesting, native plants, and wildlife habitat
303	2	305	More daylight and views to the outdoors
278	4	282	Reflect a culturally and economically diverse community.
277	0	277	Integrate building and landscape with park.
238	4	242	Preserve and honor historic buildings.
234	1	235	Modernization, technology upgrades, and expansion
174	3	177	Improve workflow and staff functionality.
168	4	172	Maintain small cozy feel.
165	3	168	Respect the residential surroundings.
163	1	164	Better connection between library & parking lot
160	3	163	Addition compatible with existing
138	1	139	Maintain on-street parking and front door.
111	0	111	Minimize expansion into park.
108	0	108	Stakeholder involvement in community garden
70	0	70	Easily identifiable as public library
43	0	43	Express change, progress, and modernization
33	0	33	Contemporary addition, different from original building
2663	26	2689	TOTAL RESPONSES



PROGRAMMING

What we heard from staff: **Exterior**



Work with Friends to
preserve / improve
NE garden



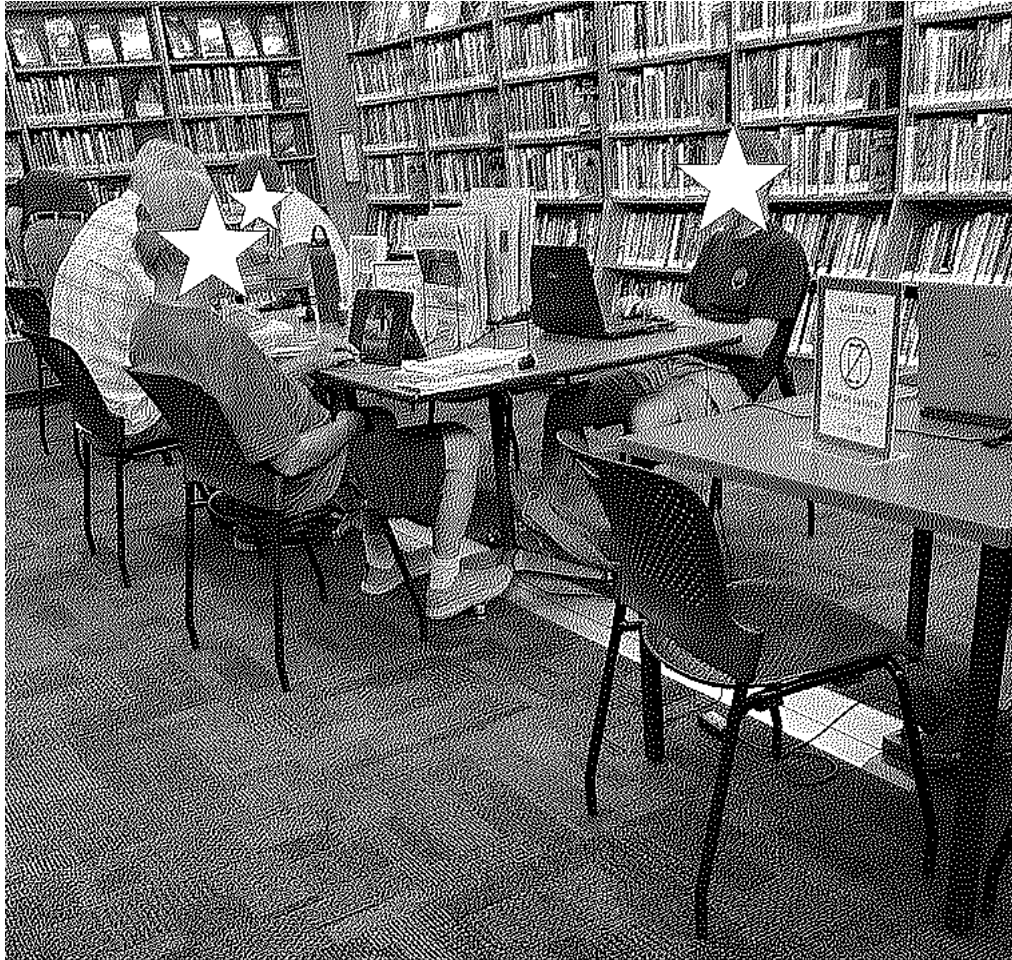
Open and welcoming



Secure Reading
Porch

PROGRAMMING

What we heard from staff: **Reading Room**



More comfortable and varied lounge reading spaces



Never enough space for books



Daylight, views, indoor-outdoor connection

PROGRAMMING

What we heard from staff: **Community Spaces**



Vestibule lobby for
after-hours community
use



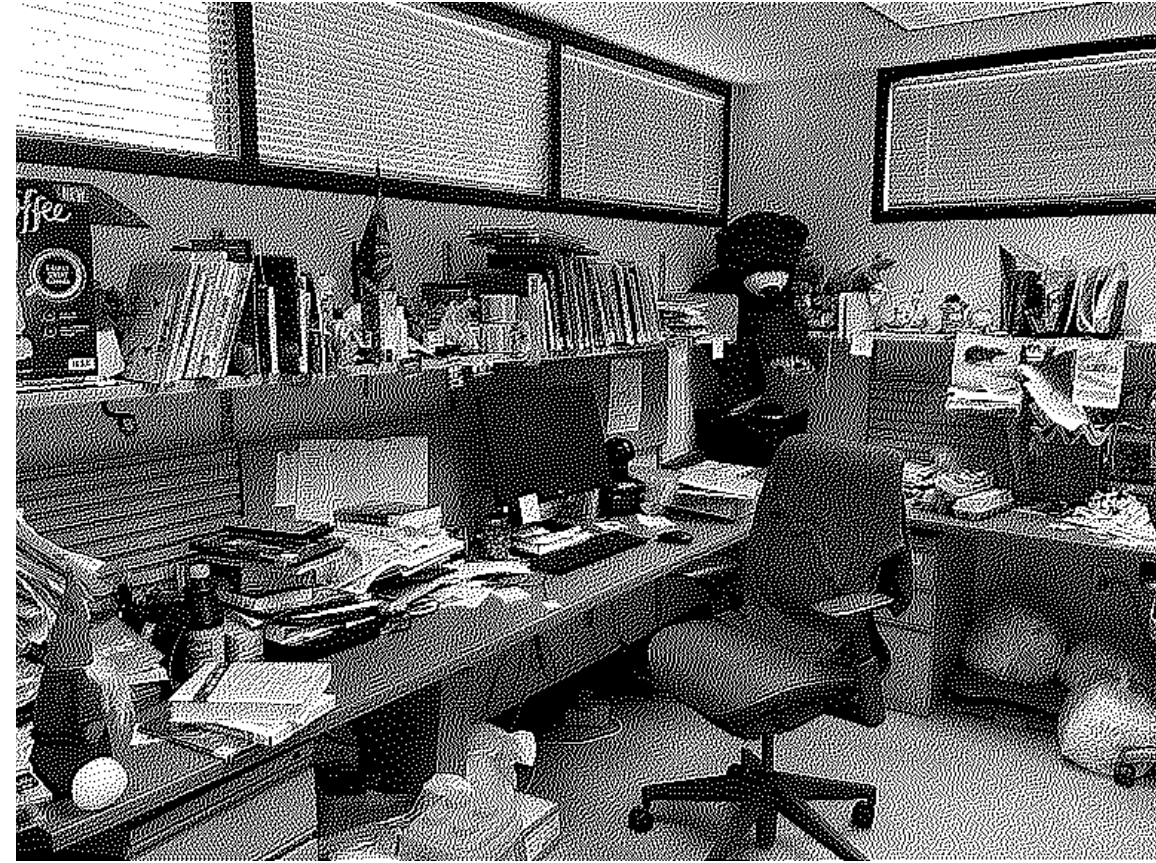
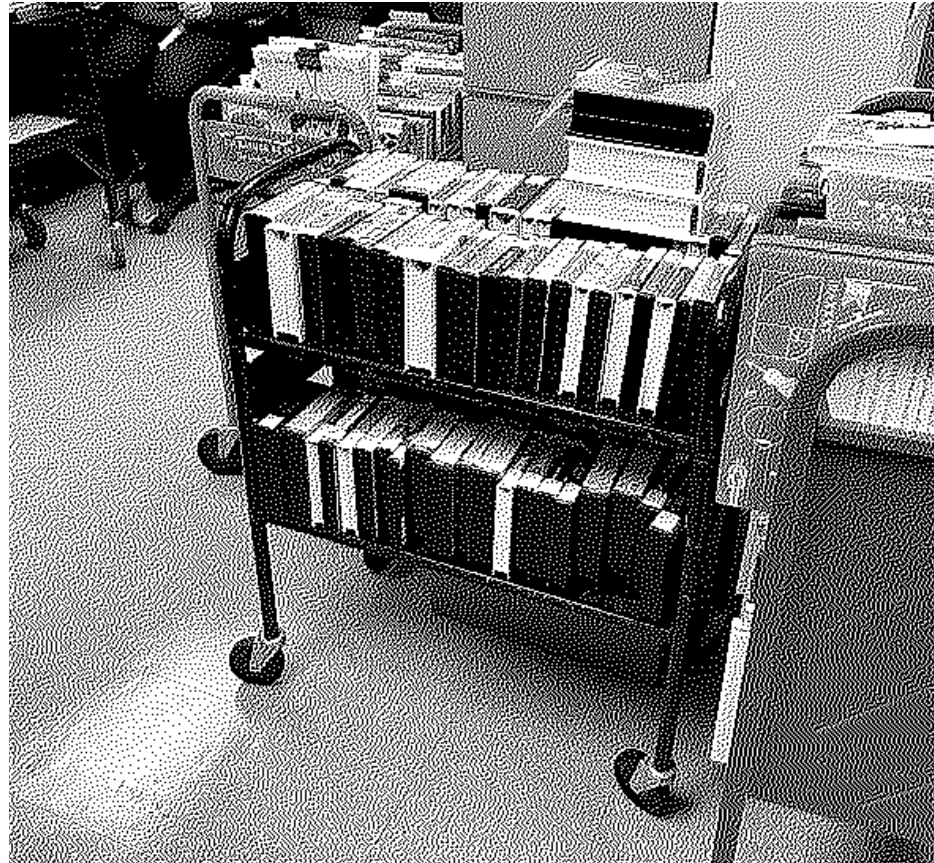
Larger, more connected
community room



Daylight and views
from community room

PROGRAMMING

What we heard from staff: **Operations**



One of smallest County libraries, but one of the largest book circulations

Staff area of libraries with equivalent circulation
Esmond Station = 1,900 SF
Sahuarita = 2,600 SF
Himmel = 1,300 sf

Low ceilings, lack of daylight, awkward and inefficient remodels

PROGRAMMING

Existing vs Proposed: Community Spaces

EXISTING

Community Spaces	
Lobby / Vestibule	490
Meeting Room / MPR	530
MPR Storage	90
Women's Toilet Room	115
Men's Toilet Room	105
Family Toilet Room	90
	1,420
ACTUAL GROSS SF	1,550
NET-TO-GROSS FACTOR	1.09

PROPOSED

Community Spaces	
Lobby / Vestibule	1,000
Meeting Room / MPR	940
MPR Storage	165
Women's Toilet Room	200
Men's Toilet Room	200
Family Toilet Room	80
	2,585
PROJECTED GROSS SF	2,790
PROJECTED NET-TO-GROSS	1.08

PROGRAMMING

Existing vs Proposed: **Reading / Stacks**

PROJECTED NET-TO-GROSS

EXISTING

Reading / Stacks	
Adult Stacks	1,600
Kids Stacks	625
Lounge / Reading	265
Children's Room	-
Children's Storage	-
Study Rooms (1) at 65 NSF E	65
	2,555

ACTUAL GROSS SF **3,140**
 NET-TO-GROSS FACTOR 1.23

PROPOSED

Reading / Stacks	
Adult Stacks	1,600
Kids Stacks	625
Lounge / Reading	800
Children's Room	-
Children's Storage	-
Study Rooms (1) at 65 NSF E	65
	3,090

PROJECTED GROSS SF **3,800**
 PROJECTED NET-TO-GROSS 1.20



PROGRAMMING

Existing vs Proposed

PROJECTED NET-TO-GROSS

EXISTING

Staff Areas	
Circulation Desk	110
Book Carts / Workflow Area	235
Open Office / Work Area	350
Processing	310
Book Drop	30
Conference Room (5)	-
Manager's Office	95
Break Room	85
	-
Delivery / Storage	-
Storage	-
Locker Room	-
Wellness	
Staff Toilet	-
	1,215

ACTUAL GROSS SF **1,365**
NET-TO-GROSS FACTOR 1.12

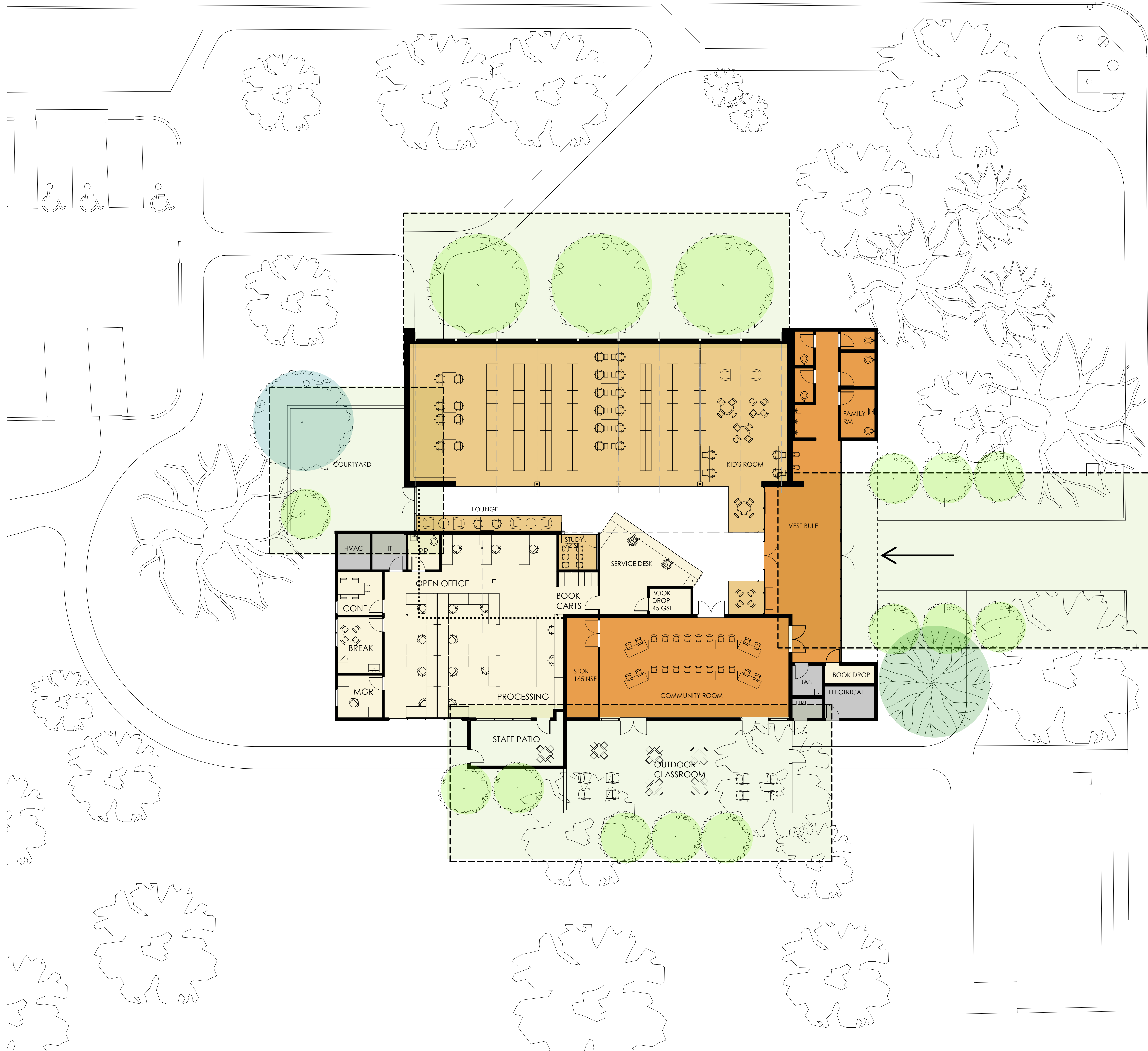
PROPOSED

Staff Areas	
Circulation Desk	200
Book Carts / Workflow Area	200
Open Office (10) + (3) at 50 S	650
Processing	250
Book Drop	45
Conference Room (5)	125
Manager's Office	120
Break Room	150
"Phone Booth" (2) @ 35 SF E	70
Delivery / Storage	80
Storage (2) at 75 EA	120
Locker Room	50
Wellness	50
Staff Toilet	50
	2,160

PROJECTED GROSS SF **2,400**
PROJECTED NET-TO-GROSS 1.11

E 1ST ST

OPTION 1: EAST ENTRY



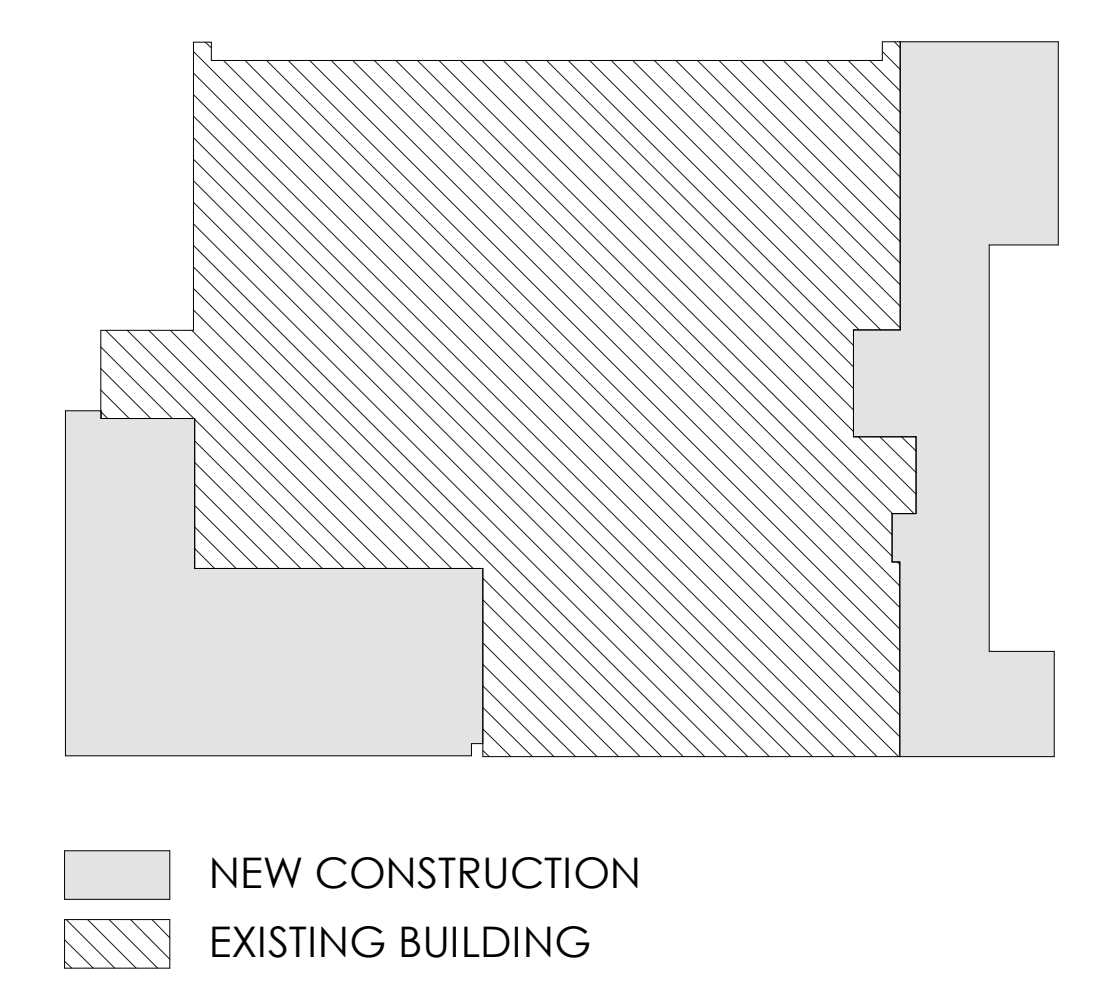
N TREAT AVE

- LARGE EASTERN ENTRY
- WEST PATIO
- OPEN AND WELCOMING
- NEW BUILD STAFF AREA
- REUSE OF EXISTING BUILDING SPACES

AREA BREAKDOWN

	2,585 COMMUNITY SHARED
	3,090 SF READING / STACKS
	2,400 SF STAFF AREA
	355 SF BUILDING SERVICE
9,400 SF TOTAL	

EXISTING VS NEW

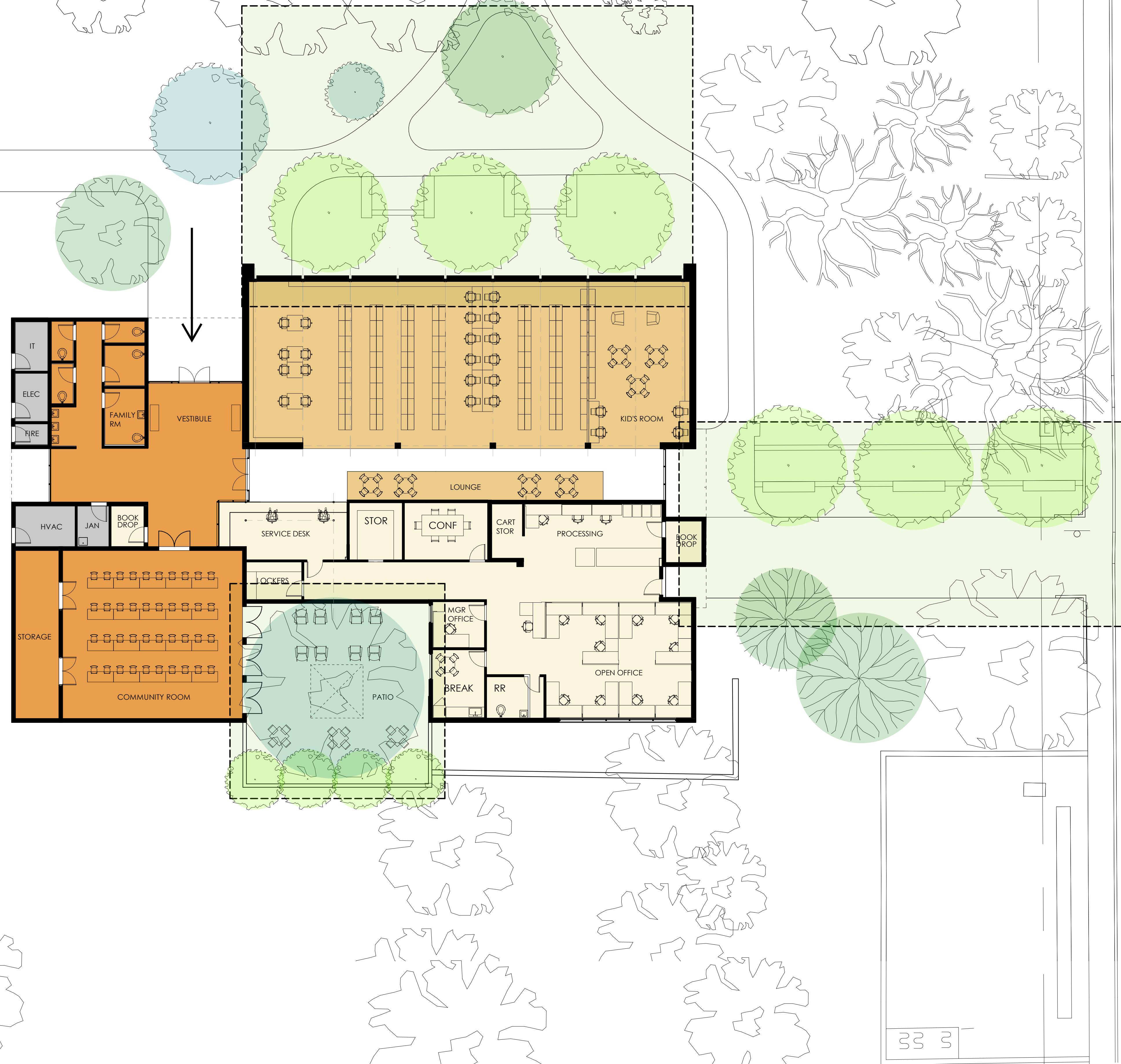


E 1ST ST

OPTION 2: WEST ENTRY

- NEW WEST ENTRY
- SOUTH PATIO OFF MPR
- NEW BUILD COMMUNITY SPACE

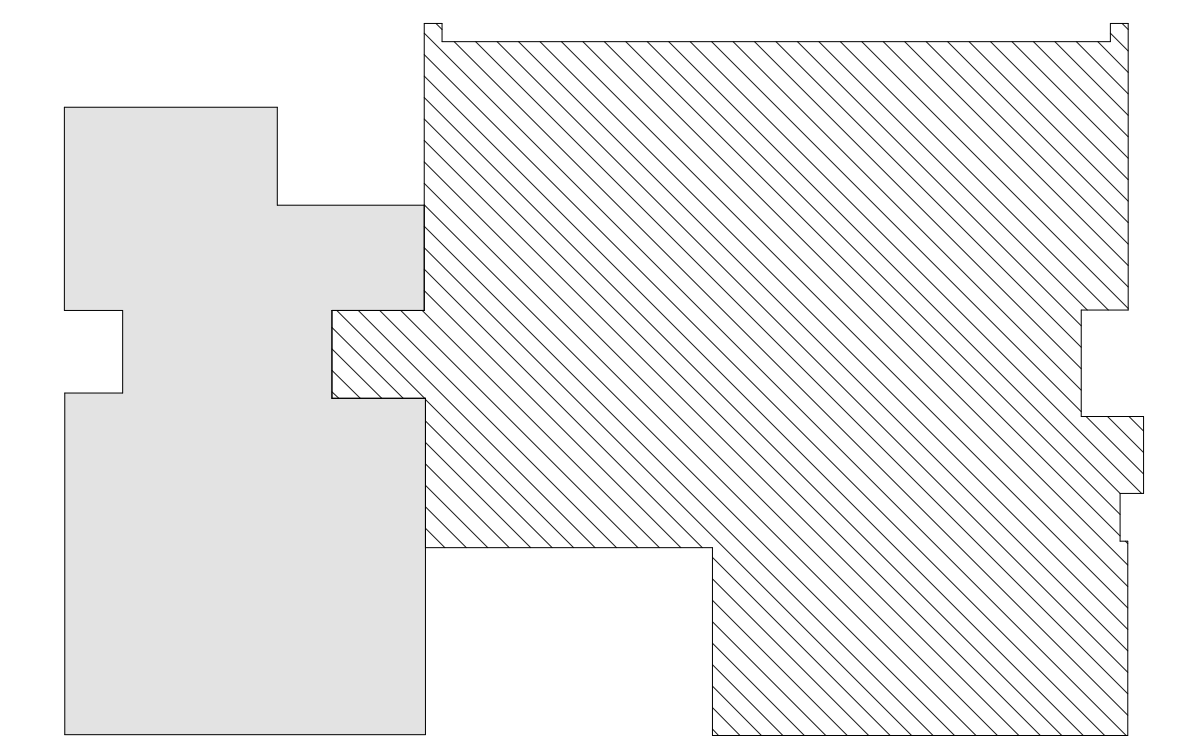
N TREAT AVE



AREA BREAKDOWN

- 2,585 COMMUNITY SHARED
 - 3,090 SF READING / STACKS
 - 2,400 SF STAFF AREA
 - 355 SF BUILDING SERVICE
- 9,400 SF TOTAL**

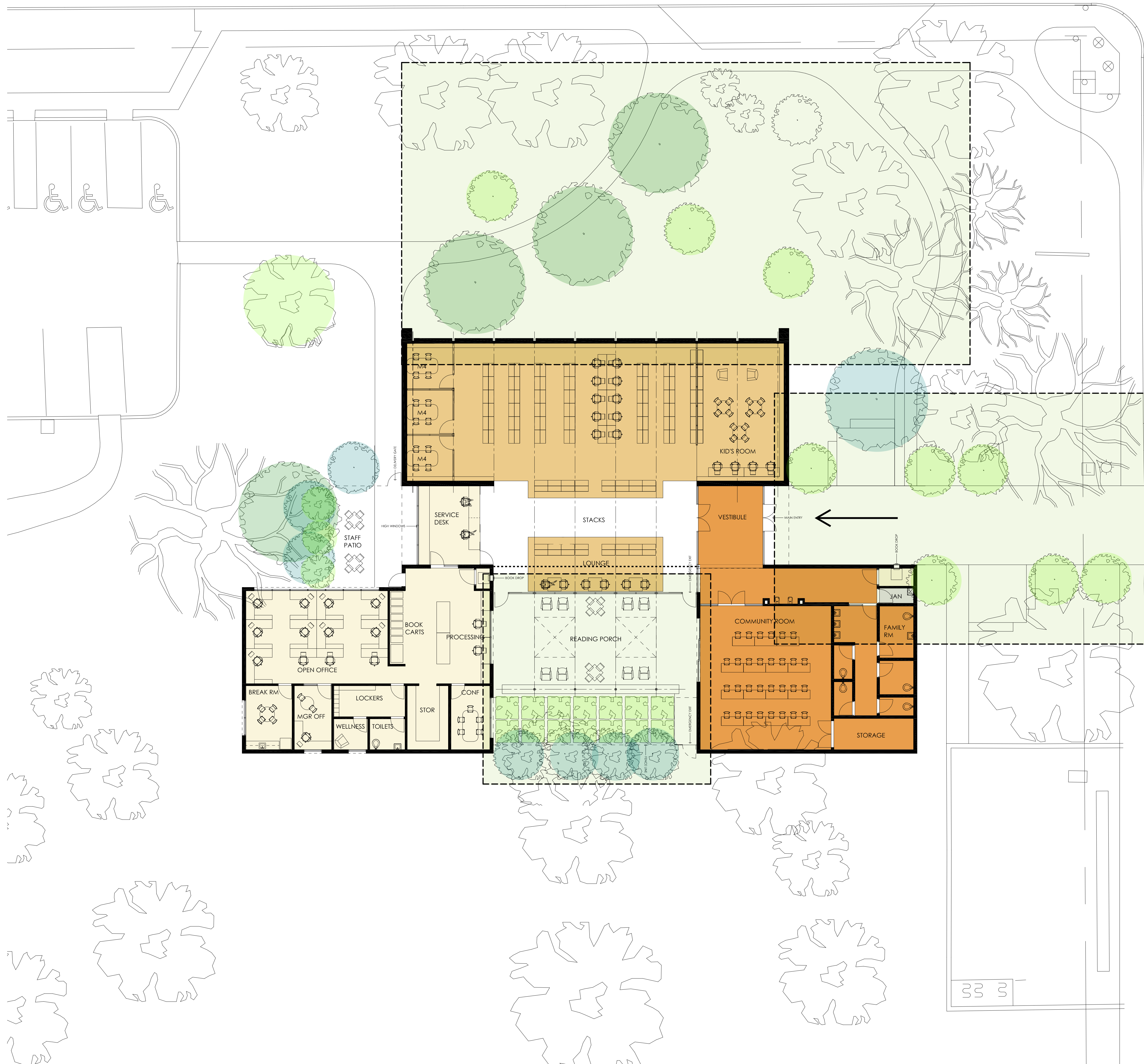
EXISTING VS NEW



- NEW CONSTRUCTION
- EXISTING BUILDING

E 1ST ST

OPTION 3: BACK PORCH



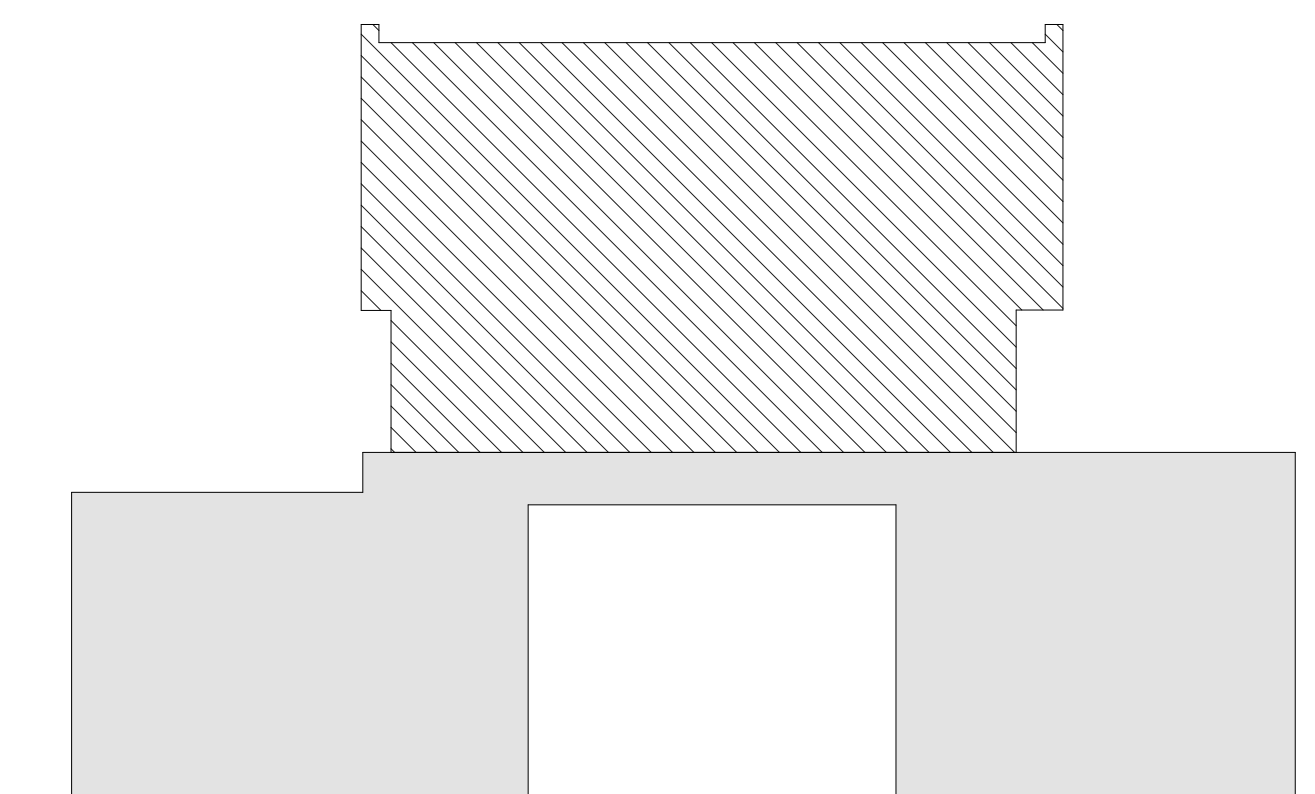
N TREAT AVE

- DAYLIGHT AND VIEWS FROM READING ROOM
- PATIO LINK TO READING ROOM AND COMMUNITY ROOM
- OPEN TO PARK

AREA BREAKDOWN

- 2,585 COMMUNITY SHARED
 - 3,090 SF READING / STACKS
 - 2,400 SF STAFF AREA
 - 355 SF BUILDING SERVICE
- 9,400 SF TOTAL**

EXISTING VS NEW



- NEW CONSTRUCTION
- EXISTING BUILDING