

## Tell Me More Troubleshooting

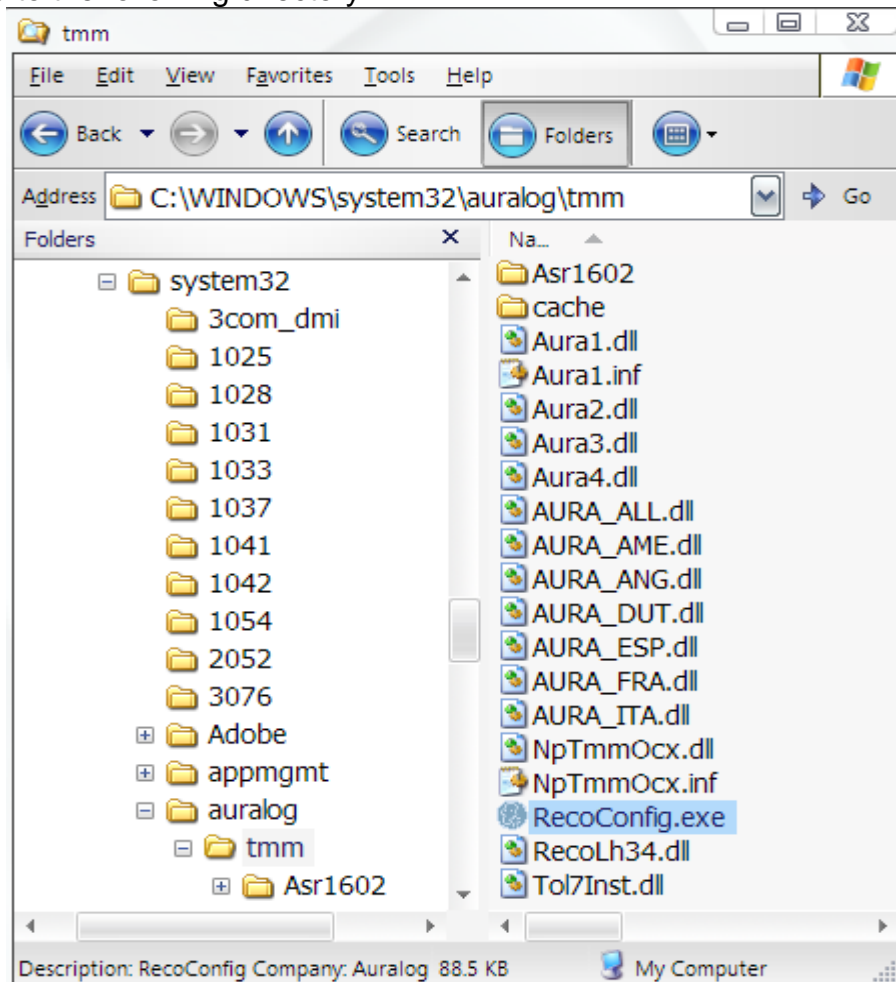
**Problem: Components do not install. It does not get past the screen that tells me to install them.**

### Component Installation Tips

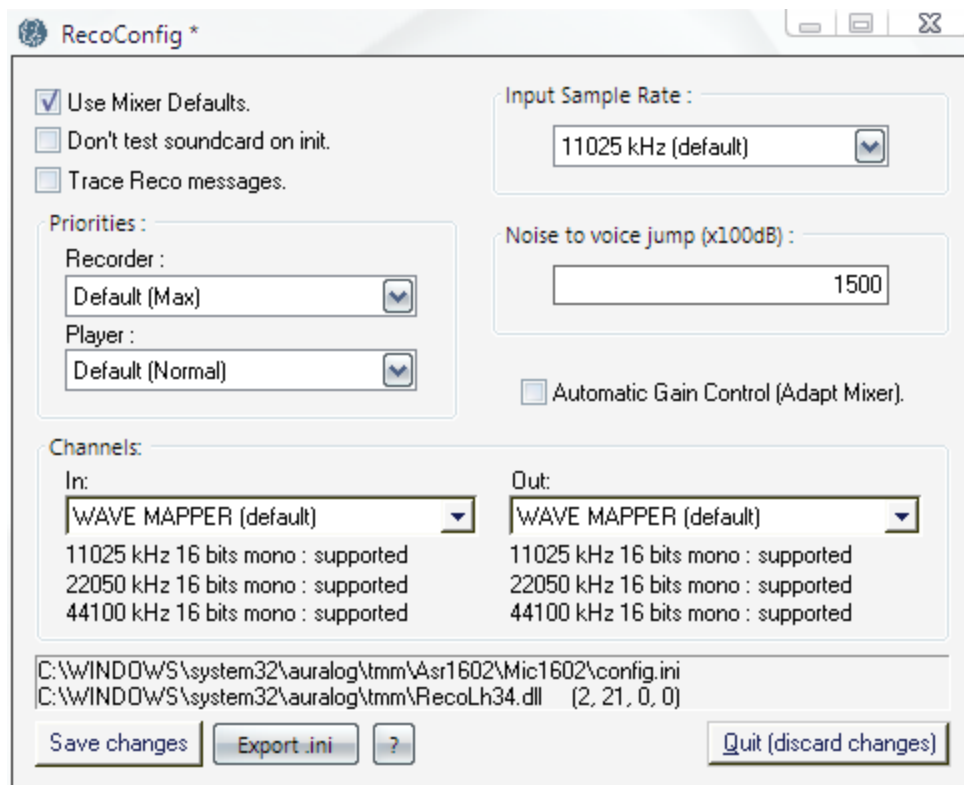
**TIP: You must have administrative privileges on your computer in order to complete the following steps.**

If the components are stuck in what seems to be a loop, it may be because you have a sound card with multiple inputs such as the ones found in Microsoft's Windows Media Center operating system. The components are actually installed but the software does not know which input to use. To fix this, *right click* on your **START** button and click on **EXPLORE**.

Navigate to the following directory:



Double click on the **RecoConfig.exe** program and select the checkbox, '**Use Mixer Defaults.**' Then click on the **Save changes** button on the bottom left corner of this screen.



You have completed the Components Install Troubleshooting steps.